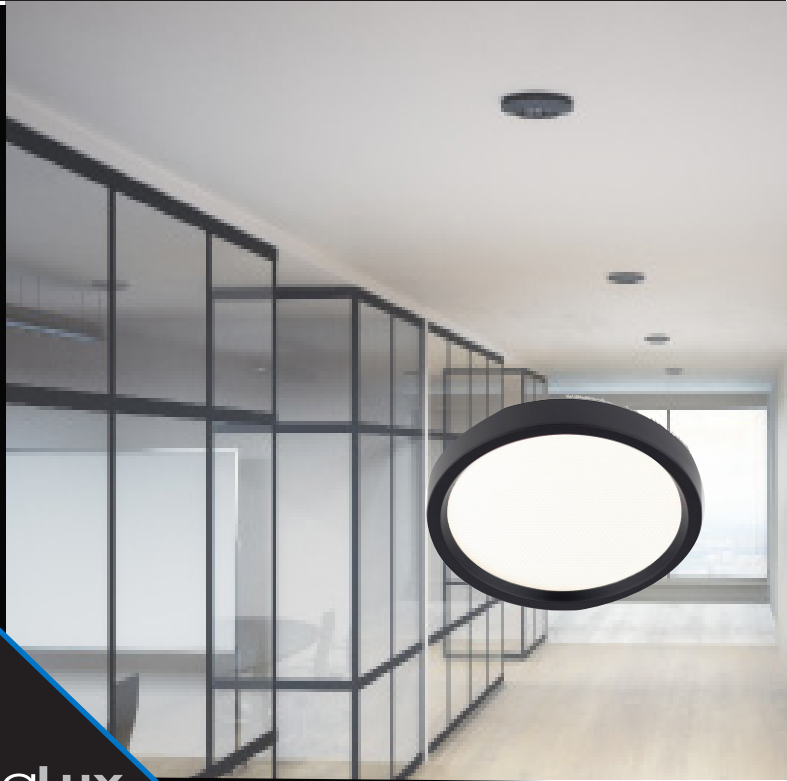
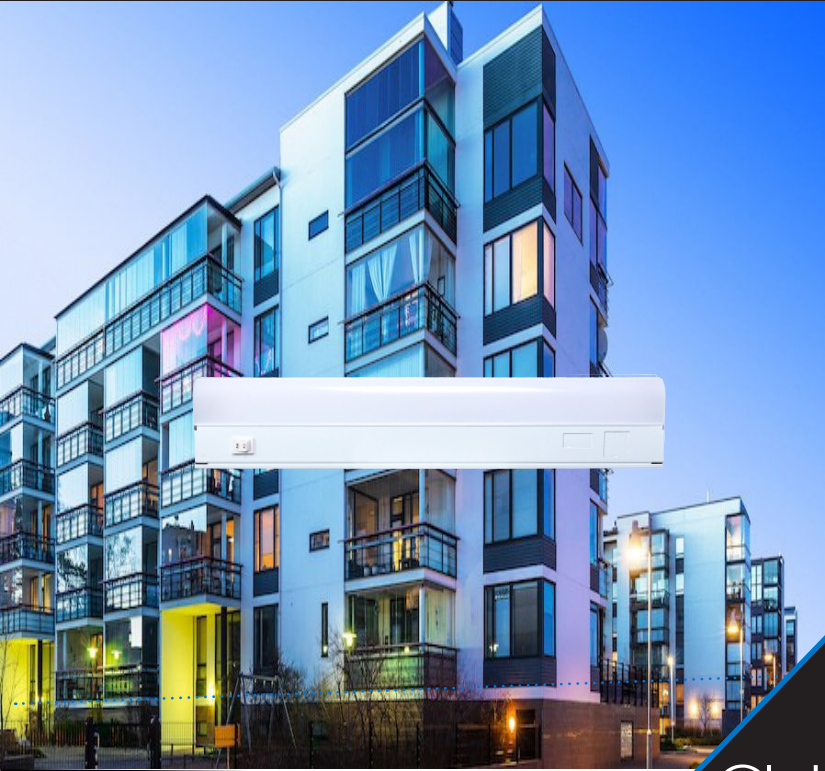


# LED Multi-Family Residential



# Product Overview

## Disk and Decorative Ceiling Fixtures



LED Disk Light  
Generation 2  
Pg 3



LED Disk Light  
Generation 4  
Pg 9



LED Round  
Disk Light  
Pg 11



LED Square  
Disk Light  
Pg.15



LED Closet  
Disk Light  
Pg.19



LED  
Undercabinet  
Pg.21



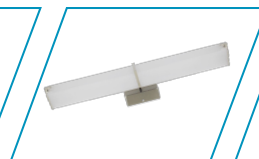
LED Generic  
Ceiling Cloud  
Pg.23



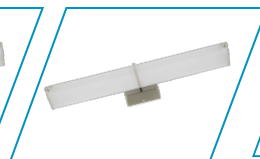
LED Ringed  
Ceiling Fixture  
Pg.24



LED Ringed  
Ceiling Oval  
Pg.25



LED Ringed  
Ceiling Oval  
Pg.27

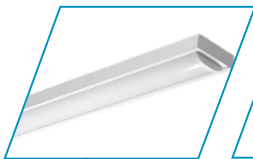


LED Ringed  
Ceiling Oval  
Pg.28



LED Surface  
Mounted Puff  
Pg.

## Stairwell Fixtures



LED Stairwell  
Fixture  
Pg.34



CCT LED Wall  
Bracket/Stairwell  
Pg.38

## Garage and Back of House Lighting



CCT Adjustable  
LED Vaportight Strip  
Pg.43



LED Channel  
Strip Light  
Pg.47



CCT Adjustable  
LED Narrow Strip  
Pg.51

## Decorative Outdoor



Decorative  
Outdoor Pocket  
Lantern  
Pg.56



LED Decorative  
Outdoor Pocket  
Lantern  
Pg.57



LED Decorative  
Outdoor Coach  
Lantern  
Pg.58



Outdoor Wall  
Sconce  
Pg.59



Architectural  
LED Bulkhead  
Pg.60



Architectural  
Wall Pack  
Pg.61



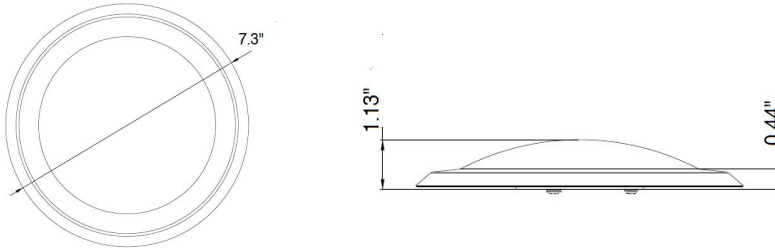
LED Outdoor  
Cylinder  
Pg.62



LED Disk Light  
LDL2 Series

# Ordering Information

## Dimensions



## Specification Features

### Construction

Aluminum spun housing with diffusion lens for optimal visual comfort while providing uniform light output. Lens design and materials provide uniform appearance without pixelation.

### Certification

All luminaires are built to UL 1598 and 2108 standards, and bear appropriate ETL labels. Wet location labeling is standard. Adheres to LM70, LM80, and TM21 industry standards. ENERGY STAR® certified product (for 3000K and 4000K only) and Title 24 qualified. Dedicated 120V Models are FCC Title 47 CFR, Part 15, Class B for residential and commercial applications. California Title 24 Compliant, JA8 Compliant, CEC Listed, State of California Energy Commission.

### Warranty

3-year Limited Warranty. See warranty documentation for more information.

### Electrical

Equipped standard with 120V 15-100% dimming driver.

### Installation

6" and 9" models are designed for mounting on a 4" electrical J-box. 4" models are designed for mounting on a 3" electrical J-box.



### LDL2 Series

#### 4" Housing

11W (750 Lumens)

#### 6" Housing

15W (1100 Lumens)

#### 8" Housing

27W (2000 Lumens)

Rated Life 50,000 hours

Limited Warranty 3 years

Efficacy Up to 70 LPW

Continuous Dimming



### Quick Ship

- LDL2-4-11-120D-930-WH
- LDL2-6-15-120D-930-WH
- LDL2-6-15-120D-940-WH
- LDL2-6-15-120D-930-NS
- LDL2-8-27-120D-930-WH

## Ordering Information

Example: LDL2-6-15-120D-930-WH

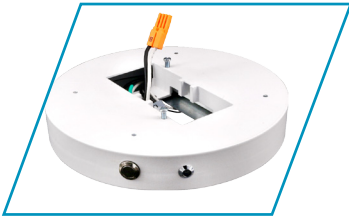
LDL2	6	13	120D	9	30	WH
<b>Series</b> LDL2 LED Disk Light	<b>Diameter</b> 4-4" <sup>2</sup> 6-6" <sup>2</sup> 8-8" <sup>2</sup>	<b>Rated Wattage</b> <b>4" Housing</b> 11- 11W (750 Lumens) <sup>2</sup> <b>6" Housing</b> 15-15W (1100 Lumens) <sup>2</sup> <b>8" Housing</b> 27- 27W (2000 Lumens) <sup>2</sup>	<b>Driver Type</b> 120D-120V Dimming, Dims to 10% 277D- 277V <sup>1</sup>	<b>CRI</b> 9 90+ CRI <sup>2</sup>	<b>Color Temp</b> 30 3000 K <sup>2</sup> 40 4000 K <sup>2</sup>	<b>Finish</b> NS- Nickel Satin <sup>1</sup> ORB-Oil Rubbed Bronze <sup>1</sup> WH- White <sup>2</sup>
<b>Options</b>						
<b>Emergency Backup</b> EM-LDL-6-WH EMBX-LDL-6-WH						

Specifications and Dimensions subject to change without notice.

<sup>1</sup> Made to order items. Minimum 90 day lead time. Minimum 500 order quantity.

<sup>2</sup> Energy star listed

# Adders Options & Accessories



## Emergency Battery

The emergency battery back-up provides 90 minutes of power to your fixture in the event of an emergency.

### Emergency Battery Back-up

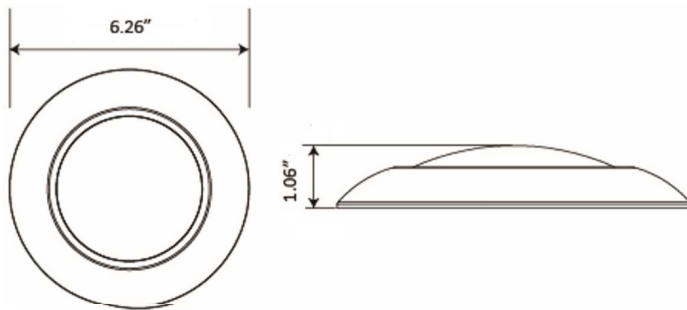
<b>EM-LDL-6-WH</b>	6" Emergency Batter Backup
<b>EMBX-LDL-6-WH</b>	6" Blank Box for EM unit



LED Disk Light, Regressed Lens  
LDL3 Series

# Ordering Information

## Dimensions



### LDL3 Series

#### 4" Housing

11W (750 Lumens)

#### 6" Housing

15W (1000 Lumens)

Rated Life 50,000 hours  
Limited Warranty 3 years  
Efficacy Up to 77 LPW  
Continuous Dimming



#### Quick Ship

LDL3-4-11-120D-930-WH

LDL3-6-15-120D-930-WH

## Specification Features



### Construction

Aluminum spun reflection with diffusion lens for Optimal visual comfort while providing uniform light output. Lens design and materials provide uniform appearance without pixelation.

### Qualifications

All luminaires are built to UL 1598 and 2108 standards, and bear appropriate ETL labels. Wet location labeling is standard. Adheres to LM70, LM80, and TM21 industry standards. ENERGY STAR® certified product (for 3000K and 4000K only) and Title 24 qualified. Dedicated 120V Models are FCC Title 47 CFR, Part 15, Class B for residential and commercial applications. California Title 24 Compliant, JA8 Compliant, CEC Listed, State of California Energy Commission.

### Warranty

3-year Limited Warranty. See warranty documentation for more information.

### Electrical

Equipped standard with 120V 10-100% dimming driver.

### Installation

6" and 9" models are designed for mounting on a 4" electrical J-box. 4" models are designed for mounting on a 3" electrical J-box.

## Ordering Information

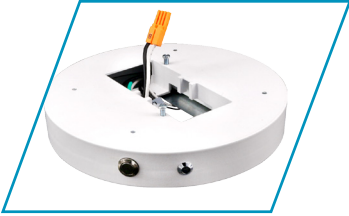
Example: LDL3-6-15-120D-930-WH

LDL3	6	15	120D	9	40	WH
<b>Series</b> LDL3 LED Disk Light, Regressed Lens	<b>Size</b> 4-4" <sup>1 2</sup> 6-6" <sup>1 2</sup>	<b>Rated Wattage</b> <b>4" Housing</b> 11- 11W (750 Lumens) <sup>1 2</sup> <b>6" Housing</b> 15-15W (1000 Lumens) <sup>1 2</sup>	<b>Driver Type</b> 120D-120V Dimming, Dims to 10% 277D- 277V <sup>1</sup>	<b>CRI</b> 9 90+ CRI <sup>1 2</sup>	<b>Color Temp</b> 30 3000 K <sup>1 2</sup> 40 4000 K <sup>1</sup>	<b>Finish</b> NS- Nickel Satin <sup>1</sup> ORB-Oil <sup>1</sup> Rubbed Bronze <sup>1</sup> WH- White <sup>1 2</sup>
<b>Options</b>						
<b>Emergency Backup</b>						
		EM-LDL-6-WH	6" Emergency Battery			
		EMBX-LDL-6-WH	Blank box to match EM unit			

Specifications and Dimensions subject to change without notice.

<sup>1</sup> Made to order items. Minimum 90 day lead time. Minimum 500 order quantity.

# Adders Options & Accessories



## Emergency Battery

The emergency battery back-up provides 90 minutes of power to your fixture in the event of an emergency.

### Emergency Battery Back-up

EM-LDL-6-WH 6" Emergency Battery Backup

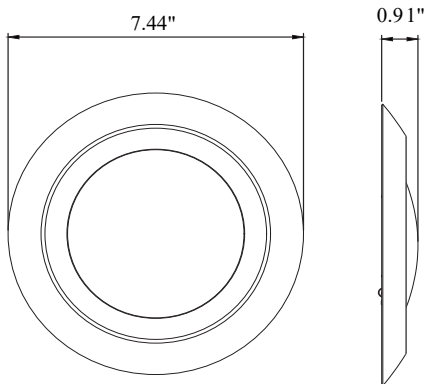
EMBX-LDL-6-WH 6" Blank Box for EM unit



# Ordering Information

## Dimensions

### LDL4-6



## Specification Features



### Construction

Aluminum spun reflection with diffusion lens for optimal visual comfort while providing uniform light output. Lens design and materials provide uniform appearance without pixelation.

### Qualifications

All luminaires are built to UL 1598 and 2108 standards, and bear appropriate ETL labels. Wet location labeling is standard. Adheres to LM70, LM80, and TM21 industry standards. ENERGY STAR® certified product (for 3000K and 4000K only) and Title 24 qualified. Dedicated 120V Models are FCC Title 47 CFR, Part 15, Class B for residential and commercial applications. California Title 24 Compliant, JAS Compliant, CEC Listed, State of California Energy Commission.

### Warranty

3-year Limited Warranty. See warranty documentation for more information.

### Electrical

Equipped standard with 120V 10-100% dimming driver.

### Installation

6" models are designed for mounting on a 4" electrical J-box. 4" models are designed for mounting on a 3" electrical J-box.

### LDL4 Series

#### 4" Housing

11W (700 Lumens)

#### 6" Housing

15W (1,050 Lumens)

Rated Life 50,000 hours  
Limited Warranty 3 years  
Efficacy Up to 70 LPW  
Triac Dimming



### Quick Ship

- LDL4-4-11-120D-930-WH
- LDL4-4-11-120D-940-WH
- LDL4-4-11-120D-930-NS
- LDL4-4-11-120D-930-ORB
- LDL4-6-15-120D-930-WH
- LDL4-6-15-120D-940-WH
- LDL4-6-15-120D-930-NS
- LDL4-6-15-120D-930-ORB

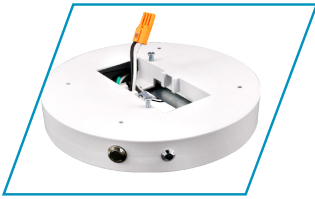
## Ordering Information

Example: LDL4-6-15-120D-930-WH

LDL4	6	15	120D	9	40	WH
<b>Series</b> LDL4 LED Disk Light, Low Profile Lens	<b>Size</b> 4-4" <sup>1 2</sup> 6- 6" <sup>2</sup>	<b>Rated Wattage</b> <b>4" Housing</b> 11- 11W (750 Lumens) <sup>1 2</sup> <b>6" Housing</b> 15-15W (1000 Lumens) <sup>1 2</sup>	<b>Driver Type</b> 120D-120V Dimming, Dims to 10%	<b>CRI</b> 9 90+ CRI <sup>1 2</sup>	<b>Color Temp</b> 30 3000 K <sup>1 2</sup> 40 4000 K <sup>1</sup>	<b>Finish</b> NS- Nickel Satin <sup>1</sup> ORB-Oil <sup>1</sup> Rubbed Bronze <sup>1</sup> WH- White <sup>1 2</sup>
<b>Options</b>						
<b>Emergency Backup</b>						
EM-LDL-6-WH 6" Emergency Battery						
EMBX-LDL-6-WH 6" Blank Box for EM unit						

Specifications and Dimensions subject to change without notice.

# Adders Options & Accessories



## Emergency Battery

The emergency battery back-up provides 90 minutes of power to your fixture in the event of an emergency.

### Emergency Battery Back-up

EM-LDL-6-WH  
EMBX-LDL-6-WH

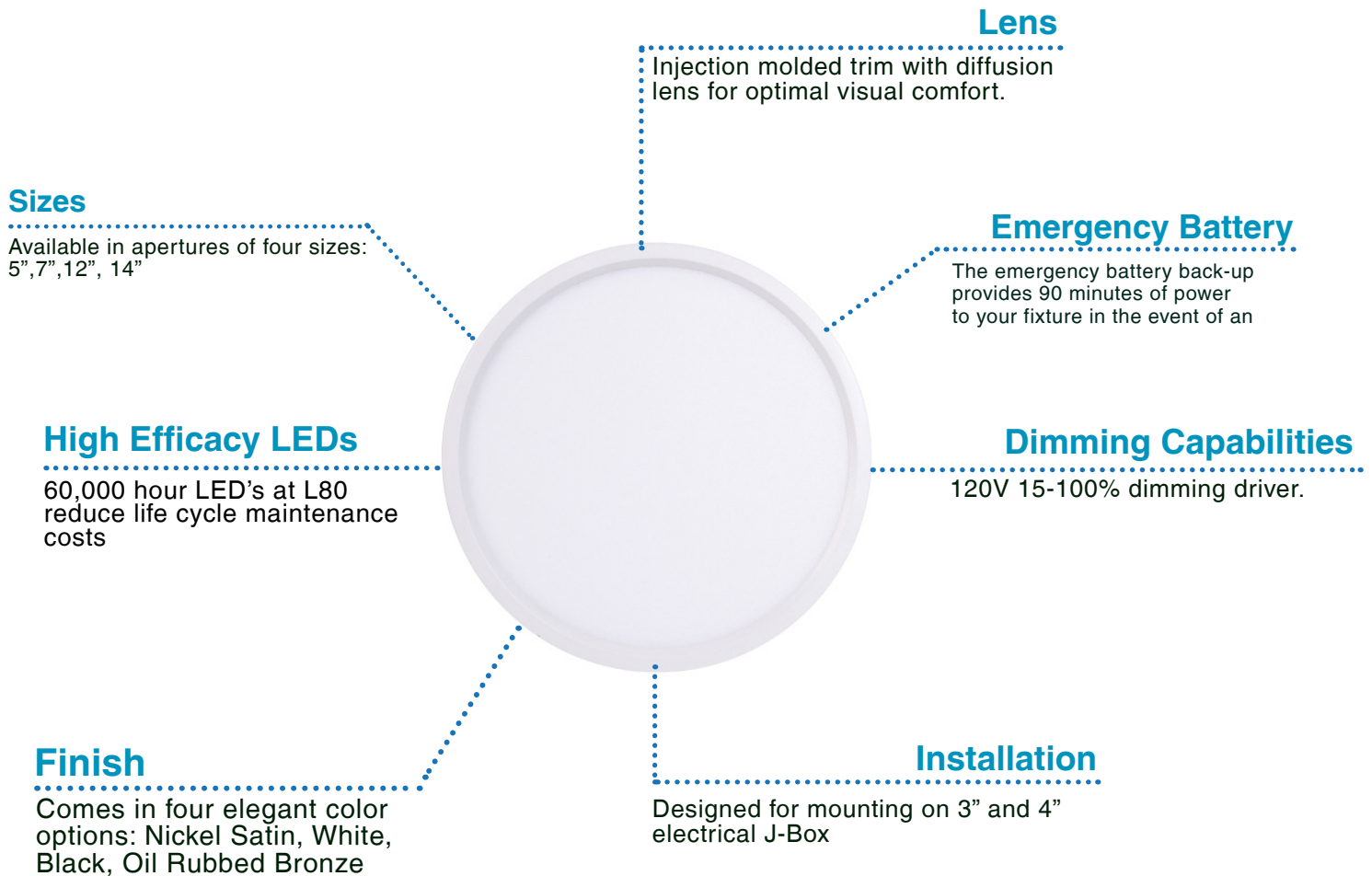
6" Emergency Battery Backup  
6" Blank Box for EM unit



LED Round Disk Light  
RDL Series

GlobalLux  
LIGHTING

# High Performance Design Can Customize To Your Environment



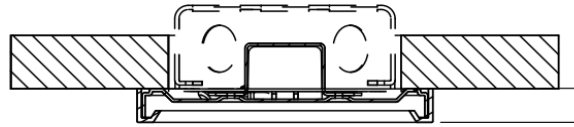
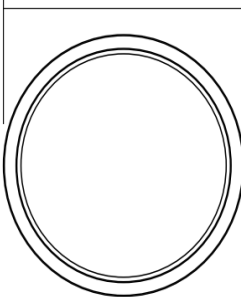
## RDL Wattage Comparison

	GlobalLux LIGHTING	Conventional Fluorescent	Conventional Incandescent
Utility rooms, office areas Model: RDL-12-22-120D-930	22W 1,400 Lumens	46W-52W	150W
Storage rooms, hallways Model: RDL-7-15-120D-930	15W 1,016 Lumens	26W-32W	100W
Storage rooms, hallways Model: RDL-5-10-120D-930	10W 580 Lumens	18W-23W	75W

# Ordering Information

## Dimensions

RDL-5: 5 3/8"(137mm)  
RDL-7: 7 7/8"(201mm)  
RDL-12: 12"(306mm)



RDL-5: 4 1/2"(115mm)  
RDL-7: 7"(179mm)  
RDL-12: 11"(280mm)



## Specification Features

### Construction

Injection molded trim with diffusion lens for optimal visual comfort while providing exceptional light output. Edge Lit technology and Lens design and materials provide uniform appearance without pixelation.

### Qualifications

All luminaires are built to UL 1598 and 2108 standards, and bear appropriate ETL labels. Wet location labeling is standard. Emergency equipped fixtures labeled UL924. Adheres to LM70, LM80, and TM21 industry standards. ENERGY STAR® certified product (for 3000K and 4000K only) and Title 24 qualified. Dedicated 120V Models are FCC Title 47 CFR, Part 15, Class B for residential and commercial applications. California Title 24 Compliant, JA8 compliant.



### Electrical

Equipped standard with 120V 10-100% dimming driver.

### Installation

Designed for mounting on 3" or 4" electrical J-Box.

### Warranty

3-year Limited Warranty. See warranty documentation for more information.

### RDL Series

#### 5" Housing

10W, 580 Lumens

#### 7" Housing

15W, 1016 Lumens

#### 12" Housing

22W, 1400 Lumens

Rated Life 50,000 hours  
Limited Warranty 3 years  
Efficacy Up to 64 LPW  
Continuous Dimming



### Quick Ship

RDL-5-10-120D-930-WH  
RDL-7-15-120D-930-WH  
RDL-12-22-120D-930-WH

## Ordering Information

Example: RDL-5-10-120D-930-BN

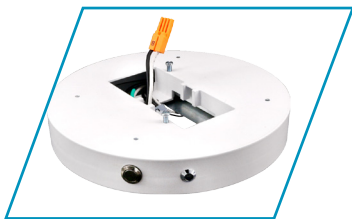
RDL	11	10	120D	9	30	BN	
<b>Series</b>	<b>Diameter</b>	<b>Rated Wattage</b>	<b>Driver Type</b>	<b>CRI</b>	<b>Color Temp</b>	<b>Finish</b>	
<b>RDL</b> LED Round Low Profile Flush	5-5" <sup>2</sup> 7- 7" <sup>2</sup> 12-12" <sup>1</sup>	<b>5" Housing</b> 10- 10W, 580 Lumens <sup>2</sup> <b>7" Housing</b> 15- 15W, 1016 Lumens <sup>2</sup> <b>12" Housing</b> 22- 22W, 1400 Lumens <sup>2</sup>	<b>120D-</b> 120V Dimming, Dims to 10% <b>277D-</b> 277V <sup>2</sup>	<b>9</b> 90+ CRI	<b>30</b> 3000 K <sup>2</sup> <b>40</b> 4000 K <sup>2</sup>	<b>BL-</b> Black <b>NS-</b> Nickel Satin <b>WH-</b> White <b>ORB-</b> Oil rubbed Bronze	
<b>Options and Accessories</b>							
		<b>EM-RDL-7-WH</b> 7" Emergency Battery <b>EMBX-RDL-7-WH</b> 7" Blank Box for EM	<b>Trim-</b> <b>RDL-7-NS</b> 7" Nickel Trim <b>Trim-</b> <b>RDL-7-BL</b> 7" Black Trim <b>Trim-</b> <b>RDL-12-NS</b> 12" Nickel Satin Trim <b>Trim-</b> <b>RDL-12-BL</b> 12" Black Trim <b>Trim-</b> <b>RDL-5-NS</b> 5" Nickel Trim <b>Trim-</b> <b>RDL-5-BL</b> 5" Black Trim				

Specifications and Dimensions subject to change without notice.

<sup>1</sup> Made to order items. Minimum 90 day lead time. Minimum 500 order quantity.

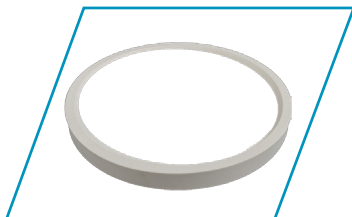
<sup>2</sup> Energy star listed

# Adders Options & Accessories



## Emergency Battery

The emergency battery back-up provides 90 minutes of power to your fixture in the event of an emergency.



## Trims

RDL Comes in four elegant colors: Nickel Satin, White, Black, Oil Rubbed Bronze

### Emergency Battery Back-up

EM-RDL-5	5" Emergency Battery
EM-RDL-7	7" Emergency Battery
EM-RDL-12	12" Emergency Battery

### Trims

Trim- RDL-5-NS	Trim- RDL-14-NS
Trim-RDL-5-BL	Trim-RDL-14-BL
Trim-RDL-7-NS	Trim-RDL-12-NS
Trim-RDL-7-BL	Trim-RDL-12-BL



LED Square Disk Light  
SDL Series

# High Performance Design Can Customize To Your Environment



### Dimming Capabilities

120V 15-100% dimming driver.

### Light Guide Plate

Unique optics guide plate controls glare and provide uniform light distribution

### Finish

Comes in three elegant color options: Brushed Nickel, Oil Rubbed Bronze, White

### Length

Available in apertures of four sizes: 5", 7", 12"

### High efficiency LED's

60,000 hour LED's at L80 reduce life cycle maintenance costs

### Emergency Battery

The emergency battery back-up provides 90 minutes of power to your fixture in the event of an emergency.

### Installation

Designed for mounting on 3" and 4" electrical

### Lens

Injection molded trim with diffusion lens for official visual comfort.

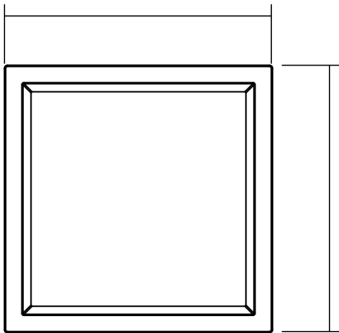
## SDL wattage Comparison

	GlobalLux LIGHTING	Conventional Fluorescent	Conventional Incandescent
Hospitals, retail stores, malls <small>Model: RDL-12-22-120D-930</small>	22W 1,400 Lumens	46W-52W	150W
Utility rooms, office areas <small>Model: RDL-7-15-120D-930</small>	15W 1,016 Lumens	26W-32W	100W
Storage rooms, hallways <small>Model: RDL-5-10-120D-930</small>	10W 550 Lumens	18W-23W	75W

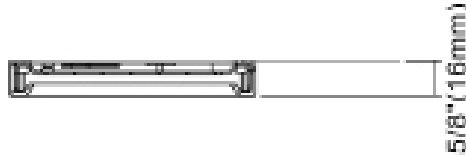


# Ordering Information

## Dimensions



SDL-5 4 3/8"  
SDL-7 6 3/8"  
SDL-12 12"



### SDL Series

#### 5" Housing

10W (550 Lumens)

#### 7" Housing

15W (1016 Lumens)

#### 12" Housing

22W (1400 Lumens)

## Specification Features



### Construction

Injection molded trim with diffusion lens for visual comfort while providing optimal light output. Edge Lit technology and Lens design and materials provide uniform appearance without pixelation.

### Qualifications

All luminaires are built to UL 1598 and 2108 standards, and bear appropriate ETL labels. Wet location labeling is standard. Emergency equipped fixtures labeled UL924. Adheres to LM70, LM80, and TM21 industry standards. ENERGY STAR® certified product (for 3000K and 4000K only) and Title 24 qualified. Dedicated 120V Models are FCC Title 47 CFR, Part 15, Class B for residential and commercial applications. California Title 24 Compliant, JA8 compliant, CEC Listed.

### Electrical

Equipped standard with 120V 10-100% dimming driver.

### Installation

Designed for mounting on 3" and 4" electrical J-Box.

### Warranty

3-year Limited Warranty. See warranty documentation for more information.

Rated Life 50,000 hours

Limited Warranty 3 years

Efficacy Up to 64 LPW

Continuous Dimming



### Quick Ship

SDL-5-10-120D-930-WH  
SDL-7-15-120D-930-WH  
SDL-12-22-120D-930-WH

## Ordering Information

Example: SDL-7-15-120D-930-WH

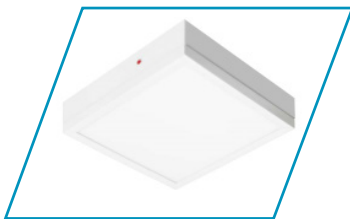
SDL	7	15	120D	9	30	WH
<b>Series</b>	<b>Diameter</b>	<b>Rated Wattage</b>	<b>Driver Type</b>	<b>CRI</b>	<b>Color Temp</b>	<b>Finish</b>
SDL LED Square Disk Light	5-5" 7-7" 12-12"	<b>5" Housing</b> 10- 10W (550 Lumens) <sup>1 2</sup> <b>7" Housing</b> 15-15W (1016 Lumens) <sup>2</sup> <b>12" Housing</b> 22-22W (1400 Lumens) <sup>2</sup>	<b>120D-</b> 120V Dimming, Dims to 10% <b>277D-</b> 277V <sup>1</sup>	<b>9</b> 90+ CRI	<b>30</b> 3000 K <sup>1</sup> <b>40</b> 4000 K <sup>1 2</sup>	<b>NS-</b> Nickel Satin <b>ORB-</b> Oil Rubbed Bronze <b>WH-</b> White <b>BL-</b> Black
			<b>Emergency Backup</b> <b>EM-SDL-5</b> 5" Emergency Battery <b>EM-SDL-7</b> 7" Emergency Battery <b>EM-SDL-12</b> 12" Emergency Battery	<b>Accessories</b> <b>Trim- SDL-5-NS</b> 5" Nickel Satin Trim <b>Trim- SDL-5-BL</b> 5" Nickel Satin Trim <b>Trim- SDL-7-NS</b> 7" Nickel Satin Trim <b>Trim- SDL-7-BL</b> 7" Nickel Satin Trim <b>Trim-SDL-12-NS</b> 12" Nickel Satin Trim <b>Trim-SDL-12-BL</b> 12" Black Trim		

Specifications and Dimensions subject to change without notice.

<sup>1</sup> Made to order items. Minimum 90 day lead time. Minimum 500 order quantity.

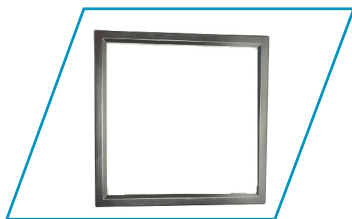
<sup>2</sup> Energy star listed

# Adders Options & Accessories



## Emergency Battery

The emergency battery back-up provides 90 minutes of power to your fixture in the event of an emergency.



## Trims

SDL Comes in four elegant colors: Nickel Satin, White, Black, Oil Rubbed Bronze

### Emergency Battery Back-up

EM-SDL-5	5" Emergency Battery
EM-SDL-7	7" Emergency Battery
EM-SDL-12	12" Emergency Battery

### Trims

Trim-SDL-5-NS	5" Nickel Satin Trim
Trim-SDL-5-BL	5" Black Trim
Trim-SDL-7-NS	7" Nickel Stain Trim
Trim-SDL-7-BL	7" Black Trim
Trim-SDL-12-NS	12" Nickel Satin Trim
Trim-SDL-12-BL	12" Black Trim

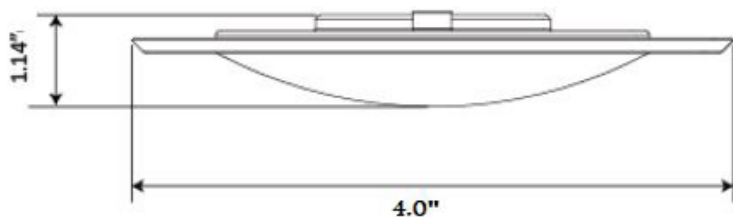


LED Closet Disk Light w/ Sensor  
CLD Series



# Ordering Information

## Dimensions



CLD Series

**4" Housing**

11W (750 Lumens)

Rated Life 50,000 hours

Limited Warranty 3 years

Efficacy Up to 70 LPW

0-10V Dimming



Quick Ship

CLD-4-11-120D-930-WH



## Specification Features

### Construction

Aluminum spun housing with diffusion lens for optimal visual comfort while providing uniform light output. Lens design and materials provide uniform appearance without pixelation.

### Certification

All luminaires are built to UL 1598 and 2108 standards, and bear appropriate ETL labels. Wet location labeling is standard. Adheres to LM70, LM80, and TM21 industry standards. ENERGY STAR® certified product (for 3000K and 4000K only) and Title 24 qualified. Dedicated 120V Models are FCC Title 47 CFR, Part 15, Class B for residential and commercial applications. California Title 24 Compliant, JA8 Compliant, CEC Listed, State of California Energy Commission.

### Warranty

3-year Limited Warranty. See warranty documentation for more information.

### Electrical

Equipped standard with 120V 15-100% triac dimming driver. Integrated On/Off passive infrared sensor turns fixture off when no occupancy is detected.

### Installation

4" models are designed for mounting on a 3" electrical J-box.

## Ordering Information

Example: CLD-4-11-120D-930-WH

CLD	6	13	120D	9	30	WH
<b>Series</b>	<b>Diameter</b>	<b>Rated Wattage</b>	<b>Driver Type</b>	<b>CRI</b>	<b>Color Temp</b>	<b>Finish</b>
CLD LED Closet Disk Light	4-4" <sup>2</sup>	<b>4" Housing</b> 11- 11W (750 Lumens) <sup>2</sup>	<b>120D</b> -120V Dimming <sup>2</sup> , Dims to 10% <b>277D</b> - 277V <sup>1</sup>	<b>9</b> 90+ CRI <sup>2</sup>	<b>30</b> 3000 K <sup>2</sup> <b>40</b> 4000 K <sup>2</sup>	<b>WH</b> - White <sup>2</sup>

Specifications and Dimensions subject to change without notice.

<sup>1</sup> Made to order items. Minimum 90 day lead time. Minimum 500 order quantity.

<sup>2</sup> Energy star listed

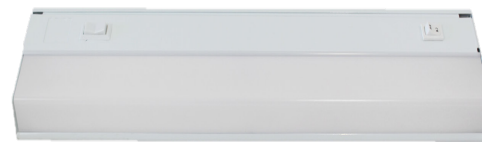
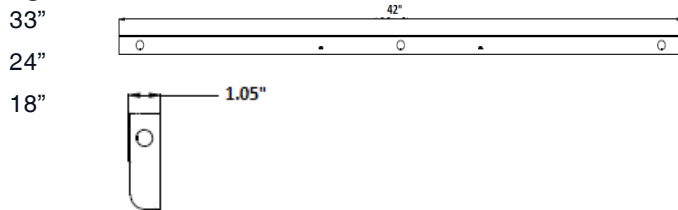


LED Undercabinet Fixture  
UCL Series

# Ordering Information

## Dimensions

### Lengths



## Specification Features

### Construction

Low profile steel housing available in white, nickel, satin, or oil rubbed bronze finishes. Designed to prevent "hot spots" on counter tops. Lens design and materials provide uniform appearance without pixilation.

### Qualifications

All luminaires are built to UL 1598 and 2108 standards, and bear appropriate ETL labels. Damp location labeling is standard. Emergency equipped fixtures labeled UL924. Adheres to LM70, LM80, and TM21 industry standards. ENERGY STAR® certified product (for 3000K and 4000K only) and Title 24 qualified. Dedicated 120V Models are FCC Title 47 CFR, Part 15, Class B for residential and commercial applications. California Title 24 Compliant, JA8 compliant, CEC Listed.



### Electrical

Equipped standard with 120V 15-100% dimming driver, operating at 60Hz. Dims to 10%.

### Installation

Each unit is secured to mounting surface using two fasteners. All mounting hardware included.

### Warranty

3-year Limited Warranty. See warranty documentation for more information.

### UCL Series

- 9" Length
- 12" Length
- 18" Length
- 24" Length
- 33" Length
- 42" Length

Rated Life 50,000 hours  
Limited Warranty 3 years  
Efficacy Up to 51 LPW  
Continuous Dimming



### Quick Ship

- UCL-9-5-120D-930/40-WH
- UCL-12-5-120D-930/40-WH
- UCL-18-9-120D-930/40-WH
- UCL-21-9-120D-930/40-WH
- UCL-24-9-120D-930/40-WH
- UCL-33-14-120D-930/40-WH
- UCL-42-18-120D-930/40-WH

## Ordering Information

Example: UCL-12-5-120D-930-WH

UCL	12	5	120D	9	30/40	WH
<b>Series</b> UCL LED Undercabinet Fixture	<b>Form Factor</b> 9- 9" Length 12- 12" Length <sup>2</sup> 18- 18" Length <sup>2</sup> 21- 21" Length <sup>2</sup> 24- 24" Length <sup>2</sup> 33- 33" Length <sup>2</sup> 42- 42" Length <sup>2</sup>	<b>Rated Wattage</b> 5-5W, 9" Length <sup>2</sup> 5- 5W, 12" Length <sup>2</sup> 9-9W, 18" Length <sup>2</sup> 9-9W, 21" Length <sup>2</sup> 9- 9W, 24" Length <sup>2</sup> 14-14W, 33" Length <sup>2</sup> 18-18W, 42" Length <sup>2</sup>	<b>Driver Type</b> 120D- 120V Dimming, Dims to 10% MV- 120-277V <sup>1</sup>	<b>CRI</b> 9 90+ CRI	<b>Color Temp</b> 30/40-3000-4000 Kelvin Dual color switch <sup>2</sup>	<b>Finish</b> NS- Nickel Satin <sup>1 2</sup> ORB- Oil Rubbed Bronze <sup>1 2</sup> WH- White <sup>2</sup>
<b>Options</b>						
<b>Accessories</b>						
RS- Rock Switch						
O- Convenience Outlit						

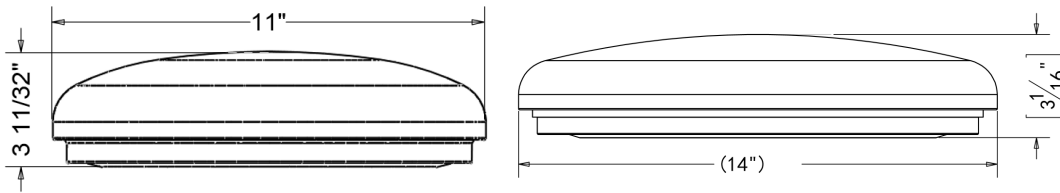
Specifications and Dimensions subject to change without notice.

<sup>1</sup> Made to order items. Minimum 90 day lead time. Minimum 500 order quantity.

<sup>2</sup> Energy star listed

# Ordering Information

## Dimensions



## Specification Features



### Construction

Features a white acrylic and white powder coated steel pan. Available in 11", 14", 19" diameters. lens design and materials provide uniform appearance without pixelation.

### Qualifications

All luminaires are built to UL 1598 and 2108 standards, and bear appropriate ETL labels. Damp location labeling is standard. Emergency equipped fixtures labeled UL924. Adheres to LM70, LM80, and TM21 industry standards. ENERGY STAR® certified product (for 3000K and 4000K only) and Title 24 qualified. Dedicated 120V Models are FCC Title 47 CFR, Part 15, Class B for residential and commercial applications. California Title 24 Compliant, JA8 compliant, CEC Listed.

### Electrical

Equipped standard with 120V 10-100% dimming driver.

### Installation

Designed for wall or ceiling mounting on 4" electrical J-Box.

### Warranty

3-year Limited Warranty. See warranty documentation for more information.

### GCC Series

- 11"**  
13W, 850 Lumens
- 14"**  
17W, 1200 Lumens
- 19"**  
26W, 1900 Lumens
- 34W**, 2700 Lumens

- Rated Life 50,000 hours
- Limited Warranty 3 years
- Efficacy Up to 77 LPW
- Continuous Dimming



### Quick Ship

- GCC-11-13-120D-940
- GCC-14-17-120D-940
- GCC-14-26-MV-940
- GCC-19-34-MV-940

## Ordering Information

Example:GCC-11-13-120D-940

GCC	11	13	120D	9	40
<b>Series</b> GCC LED Generic Ceiling Cloud	<b>Size</b> 11- 11"Pan <sup>2</sup> 14- 14"Pan <sup>2</sup> 19- 19" Pan <sup>2</sup>	<b>Rated Wattage</b> <u>11" Pan</u> 13- 13W, 850 Lumens <sup>2</sup> <u>14" Pan</u> 17- 17W, 1200 Lumens <sup>2</sup> 26- 26W, 1900 Lumens <sup>2</sup> <u>19" Pan</u> 34- 34W, 2700 Lumens <sup>2</sup>	<b>Driver Type</b> 120D- 120V Dimming, Dims to 10% <u>26W &amp; 34W</u> MV- 120-277V	<b>CRI</b> 8 80+ CRI <sup>1</sup> 9 90+ CRI <sup>2</sup>	<b>Color Temp</b> 30 3000 K <sup>1</sup> 40 4000 K <sup>2</sup>
<b>Options</b>					
<b>Emergency Backup</b> EML8 800lm EML16 1600lm			<b>Controls</b> MOS-Microwave Sensor on/off		

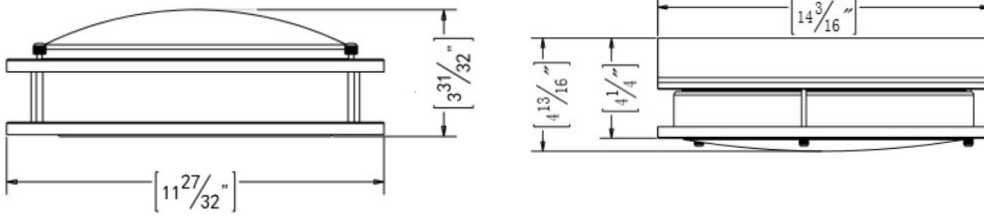
Specifications and Dimensions subject to change without notice.

<sup>1</sup> Made to order items. Minimum 90 day lead time. Minimum 500 order quantity.

<sup>2</sup> Energy star listed

# Ordering Information

## Dimensions



## Specification Features



### Construction

Contemporary styled fixture. Twin steel rings surround a milk white acrylic diffuser which provides widespread and even illumination

### Qualifications

All luminaires are built to UL 1598 and 2108 standards, and bear appropriate ETL labels. Damp location labeling is standard. Adheres to LM70, LM80, and TM21 industry standards. ENERGY STAR® certified product (for 3000K and 4000K only) and Title 24 qualified. Dedicated 120V Models are FCC Title 47 CFR, Part 15, Class B for residential and commercial applications. California Title 24 Compliant, JA8 compliant, CEC Listed.

### Warranty

3-year limited warranty. See complete warranty for terms and exclusions. (Labor not included).

### Electrical

Equipped standard with 120V 10-100% dimming driver.

### Installation

Designed for mounting on 4" electrical J-Box.

### DCR Series

#### 12" Pan

13W, 910 Lumens

#### 14" Pan

17W, 1200 Lumens

#### 16" Pan

26W, 2600 Lumens

Rated Life 50,000 hours

Limited Warranty 3 years

Efficacy Up to 100 LPW

Continuous Dimming



### Quick Ship

DCR-12-13-120D-930-NS  
DCR-14-17-120D-930-NS

## Ordering Information

Example: DCR-12-13-120D-930-NS

DCR	12	13	120D	9	30	NS
<b>Series</b> DCR LED Ringed Ceiling Fixture	<b>Size</b> 12- 12" Pan 14- 14" Pan 16- 16" Pan <sup>1</sup>	<b>Rated Wattage</b> <b>12" Pan</b> 13- 13W, 910 Lumens <sup>2</sup> <b>14" Pan</b> 17- 17W, 1200 Lumens <sup>2</sup> <b>16" Pan</b> 26- 26W, 2600 Lumens <sup>2</sup>	<b>Driver Type</b> 120D-120V Dimming, Dims to 10% MV- 120-277V <sup>1</sup>	<b>CRI</b> 9 90+ CRI	<b>Color Temp</b> 30 3000 K <sup>2</sup> 40 4000 K <sup>1</sup>	<b>Finish</b> NS- Nickel Satin <sup>2</sup> ORB- Oil Rubbed Bronze <sup>1 2</sup>
<b>Options</b>						
<b>Emergency Backup</b>	<b>Controls</b>	<b>Accessories</b>				
N/A	N/A	N/A				

Specifications and Dimensions subject to change without notice.

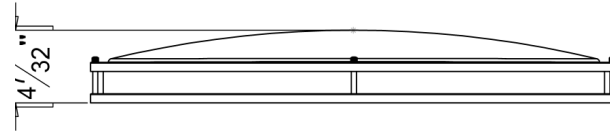
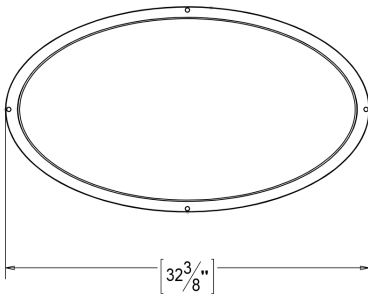
<sup>1</sup> Made to order items. Minimum 90 day lead time. Minimum 500 order quantity.

<sup>2</sup> Energy star listed



# Ordering Information

## Dimensions



## Specification Features



### Construction

Contemporary style fixture. Twin steel rings surround a milk white acrylic diffuser provides widespread and even illumination.

### Qualifications

All luminaires are built to UL 1598 and 2108 standards, and bear appropriate ETL labels. Damp location labeling is standard. Emergency equipped fixtures labeled UL924. Adheres to LM70, LM80, and TM21 industry standards. ENERGY STAR® certified product (for 3000K and 4000K only) and Title 24 qualified. Dedicated 120V Models are FCC Title 47 CFR, Part 15, Class B for residential and commercial applications. California Title 24 Compliant, CEC Listed.

### Warranty

3-year Limited Warranty. See warranty documentation for more information.

### Electrical

Equipped with 120-277V fixed output driver operating at 60 Hz.

### Installation

Designed for wall or ceiling mounting on 4" electrical J-Box.

### DCRO Series

34W, (2900) Lumens

Rated Life 50,000 hours  
Limited Warranty 3-years  
Efficacy Up to 73 LPW

### Quick Ship

DCRO-34-MV-930-NS

## Ordering Information

Example: DCRO-34-MV-930-NS

DCRO	34	MV	9	30	NS
<b>Series</b> DCRO LED Oval Ringed Decorative Ceiling Light	<b>Rated Wattage</b> 34- 34W (2900) Lumens <sup>2</sup>	<b>Driver Type</b> MV- 120-277V <sup>2</sup>	<b>CRI</b> 9 90+ CRI <sup>2</sup>	<b>Color Temp</b> 30 3000 K <sup>2</sup> 40 4000 K <sup>1</sup>	<b>Finish</b> NS- Nickel <sup>2</sup>
<b>Options</b>					
<b>Emergency Backup</b>		<b>Controls</b>		<b>Accessories</b>	
EML8 800lm EML16 1600lm		MOS- Microwave Sensor		N/A	

Specifications and Dimensions subject to change without notice.

<sup>1</sup> Made to order items. Minimum 90 day lead time. Minimum 500 order quantity.

<sup>2</sup> ...

# Adders Options & Accessories



## Integral Microwave

An economical fixture mounted sensor utilizing passive infrared technology turns the fixture On/Off.



## Emergency

The emergency battery back-up provides 90 minutes of power to your fixture in the event of an emergency.

### Emergency Battery Back-up

- EML8** 800 Lumen Emergency Battery
- EML16** 1600 Lumen Emergency Battery

### Motions Sensors

- MOS** Integral Mic. Sensor On/Off

### Voltage

- MV** 120-277V

# Ordering Information

## Dimensions



### LSV Series

#### 24" Length

20W, 1,920 Lumens

#### 36" Length

27W, 2,592 Lumens

#### 48" Length

36W, 3,456 Lumens



## Specification Features

### Construction

Single ring surround a milk white acrylic diffuser with decorative end caps provides widespread and even illumination. Lens design and materials provide uniform illumination without pixelation.

### Qualifications

All luminaires are built to UL 1598 and 2108 standards, and bear appropriate ETL labels. Damp location labeling. Adheres to LM70, LM80, and TM21 industry standards. ENERGY STAR® certified product (for 3000K and 4000K only) and Title 24 qualified. Dedicated 120V Models are FCC Title 47 CFR, Part 15, Class B for residential and commercial applications. California Title 24 Compliant, JA8 compliant, CEC Listed.

### Electrical

Equipped standard with 120V fixed output driver operating at 60 Hz.

### Installation

Designed for wall mounting on 4" electrical J-Box.

Rated Life 60,000 hours

Limited Warranty 3 years

Efficacy up to 96 LPW

### Quick Ship

LSV-24-20-120-930-BN  
LSV-36-27-120-930-BN  
LSV-48-36-120-930-BN

### Warranty

3-year limited warranty. See complete warranty for terms and exclusions. (Labor not included).

## Ordering Information

Example: LSV-24-20-120-930-BN

LSV	24	18	120	CRI	30	NS
<b>Series</b> LSV LED Square Vanity	<b>Form Factor</b> 24- 24" Length <sup>2,3</sup> 36- 36" Length <sup>2,3</sup> 48- 48" Length <sup>2,3</sup>	<b>Rated Wattage</b> <b>24" Housing</b> 20- 20W, 1,920 Lumens <b>36" Housing</b> 27- 27W, 2,592 Lumens <b>48" Housing</b> 36- 36W, 3,456 Lumens	<b>Driver Type</b> 120- 120V <sup>1</sup>	<b>CRI</b> 9 90+CRI	<b>Color Temp</b> 30 3000K <sup>3</sup>	<b>Finish</b> <b>BN-</b> Brushed Nickel <b>ORB--</b> Oil Rubbed Bronze

Specifications and Dimensions subject to change without notice

# Ordering Information

## Dimensions



### LRV Series

- 24" Length**  
20W, 1,920 Lumens
- 36" Length**  
27W, 2,592 Lumens
- 48" Length**  
36W, 3,456 Lumens

## Specification Features



### Construction

Single ring surround a milk white acrylic diffuser with decorative end caps provides widespread and even illumination. Lens design and materials provide uniform illumination without pixelation.

### Qualifications

All luminaires are built to UL 1598 and 2108 standards, and bear appropriate ETL labels. Damp location labeling. Adheres to LM70, LM80, and TM21 industry standards. ENERGY STAR® certified product (for 3000K and 4000K only) and Title 24 qualified. Dedicated 120V Models are FCC Title 47 CFR, Part 15, Class B for residential and commercial applications. California Title 24 Compliant, JA8 compliant, CEC Listed.

### Warranty

3-year limited warranty. See complete warranty for terms and exclusions. (Labor not included).

### Electrical

Equipped standard with 120V fixed output driver operating at 60 Hz.

### Installation

Designed for wall mounting on 4" electrical J-Box.

Rated Life 60,000 hours  
Limited Warranty 3 years  
Efficacy up to 96 LPW

### Quick Ship

LRV-24-20-120-930-BN  
LRV-36-27-120-930-BN  
LRV-48-36-120-930-BN

## Ordering Information

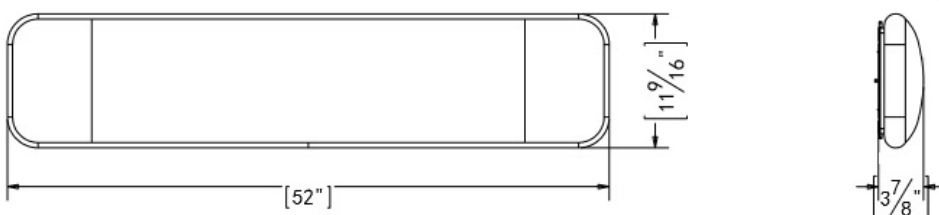
Example: LRV-24-20-120-930-BN

LRV	24	18	120	CRI	30	NS
<b>Series</b> LRV LED Round Vanity	<b>Form Factor</b> 24- 24" Length <sup>2,3</sup> 36- 36" Length <sup>2,3</sup> 48- 48" Length <sup>2,3</sup>	<b>Rated Wattage</b> <b>24" Housing</b> 20- 20W, 1,920 Lumens <b>36" Housing</b> 27- 27W, 2,592 Lumens <b>48" Housing</b> 36- 36W, 3,456 Lumens	<b>Driver Type</b> 120- 120V <sup>1</sup>	<b>CRI</b> 9 90+CRI	<b>Color Temp</b> 30 3000K <sup>3</sup>	<b>Finish</b> BN- Brushed Nickel  ORB-- Oil Rubbed Bronze

Specifications and Dimensions subject to change without notice

# Ordering Information

## Dimensions



**LSMP Series**

40W (3520 Lumens)

## Specification Features



### Construction

Rugged construction, solid die formed, cold-rolled steel housing. All surfaces powder coated after fabrication. Frosted acrylic diffusers provides even consistent light while reducing glare. Lens design and materials provide uniform appearance without pixelation.

### Qualifications

All luminaires are built to UL 1598 and 2108 standards, and bear appropriate ETL labels. Damp location labeling is standard. Emergency equipped fixtures labeled UL924. Adheres to LM70, LM80, and TM21 industry standards. ENERGY STAR® certified product (for 3000K and 4000K only) and Title 24 qualified. Dedicated 120V Models are FCC Title 47 CFR, Part 15, Class B for residential and commercial applications. California Title 24 Compliant, JA8 compliant, CEC Listed.

### Electrical

Equipped standard with fixed output driver. Optional 0-10V continuous dimming driver that works with any standard 0-10V control/dimmer. Long-Life LED's 60,000 hours at L80 with projected life over 100,000 hours for reduced life cycle maintenance costs.

### Installation

Suitable for surface mounting, suspension, or stem mounting, individually or in continuous rows.

### Warranty

5-year limited warranty. See complete warranty for terms and exclusions. (Labor not included).

Rated Life 60,000 hours  
Limited Warranty 5 years  
Efficacy up to 88 LPW  
Continuous Dimming



Quick Ship

LSMP-8-40-MV-940

## Ordering Information

Example: LSMP-8-40-MV-940

LSMP	8	40	MVD	9	40
<b>Series</b> LSMP LED Surface Mounted Puff	<b>Size</b> 8- 8" Width	<b>Rated Wattage</b> 40- 40W (3520 Lumens)	<b>Driver Type</b> MV- 120-277V MVD- 120-277V; 0-10V Dimming <sup>1</sup>	<b>CRI</b> 9 90+CRI	<b>Color Temp</b> 40 4000K 50 5000K <sup>1</sup>

Specifications and Dimensions subject to change without notice.

<sup>1</sup> Made to order items. Minimum 90 day lead time. Minimum 500 order quantity.

<sup>2</sup> Energy Star Listed

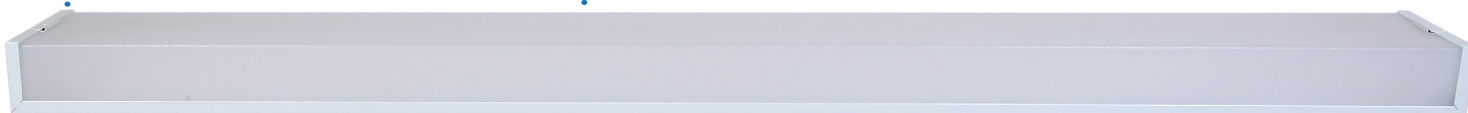
# High Performance Design Can Customize To Your Environment

## Sensor capabilities

Optional On/Off, Dimming, Bi-Level configurations for networked control. Servicing 10'-45' mounting heights with aisle or 360 detection.

## Lens

Full-length U-wrap Acrylic lens and a one-piece fabricated steel body.



## Housing

Rugged construction, solid die-formed, cold-rolled steel housing. Frosted diffusers provides even consistent light while reducing glare.

## Knockouts

Back and end knockouts.



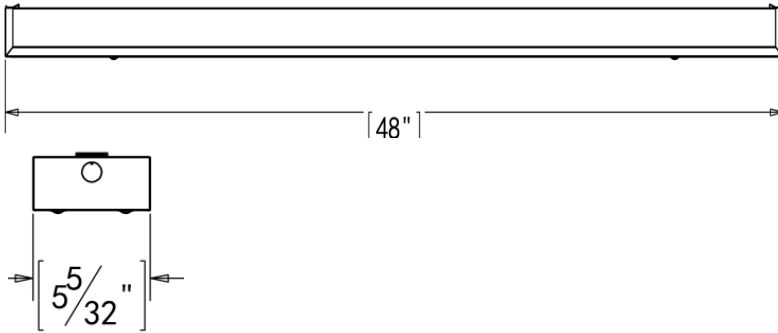
## LEW Wattage Comparison

Workshops, garages, corridors, multi-family homes



# Ordering Information

## Dimensions



**LEW Series**

40W (4000 Lumens)



## Specification Features

### Construction

Rugged construction, solid die formed, cold-rolled steel housing. All surfaces powder coated after fabrication. Frosted polystyrene diffusers provides even consistent light while reducing glare. Lens design and materials provide uniform appearance without pixelation.

### Qualifications

All luminaires are built to UL 1598 and 2108 standards, and bear appropriate ETL labels. Damp location labeling is standard. Emergency equipped fixtures labeled UL924. Adheres to LM70, LM80, and TM21 industry standards. ENERGY STAR® certified product (for 3000K and 4000K only).

### Warranty

5-year limited warranty. See complete warranty for terms and exclusions. (Labor not included).

### Electrical

Equipped standard with fixed output driver. Long-Life LED's 60,000 hours at L80 with projected life over 100,000 hours for reduced life cycle maintenance costs.

### Installation

Suitable for surface mounting, suspension, or stem mounting, individually or in continuous.

**Rated Life** 60,000 hours  
**Limited Warranty** 5 years  
**Efficacy** Up to 103 LPW

**Quick Ship**

LEW-5-40-MV-840

## Ordering Information

Example: LEW-5-40-MV-840

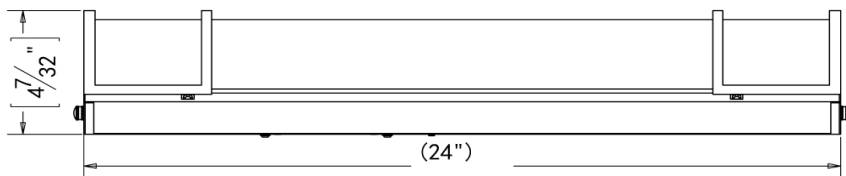
LEW	5	40	MV	8	40
<b>Series</b> LEW LED Economy Wrap	<b>Size</b> 5- 5" Width	<b>Rated Wattage</b> 40- 40W (4000 Lumens)	<b>Driver Type</b> MV- 120-277V	<b>CRI</b> 8 80+ CRI	<b>Color Temp</b> 40 4000 K 50 5000 K <sup>1</sup>

Specifications and Dimensions subject to change without notice.

<sup>1</sup> Made to order items. Minimum 90 day lead time. Minimum 500 order quantity.

# Ordering Information

## Dimensions



### RVL Series

- 24" Length**  
17W, 2000 Lumens
- 36" Length**  
26W, 2600 Lumens
- 48" Length**  
34W, 3400 Lumens

## Specification Features



### Construction

Twin steel rings surround a milk white acrylic diffuser provides widespread and even illumination. Lens design and materials provide uniform appearance without pixelation.

### Qualifications

All luminaires are built to UL 1598 and 2108 standards, and bear appropriate ETL labels. Damp location labeling. Adheres to LM70, LM80, and TM21 industry standards. ENERGY STAR® certified product (for 3000K and 4000K only) and Title 24 qualified. Dedicated 120V Models are FCC Title 47 CFR, Part 15, Class B for residential and commercial applications. California Title 24 Compliant, JA8 compliant, CEC Listed.

### Electrical

Equipped standard with 120-277V fixed output driver operating at 60 Hz.

### Installation

Designed for wall mounting on 4" electrical J-Box.

- Rated Life 60,000 hours
- Limited Warranty 3 years
- Efficacy up to 118 LPW
- Dimming N/A



Quick Ship

RVL-24-17-MV-930-NS

## Warranty

3-year limited warranty. See complete warranty for terms and exclusions. (Labor not included).

## Ordering Information

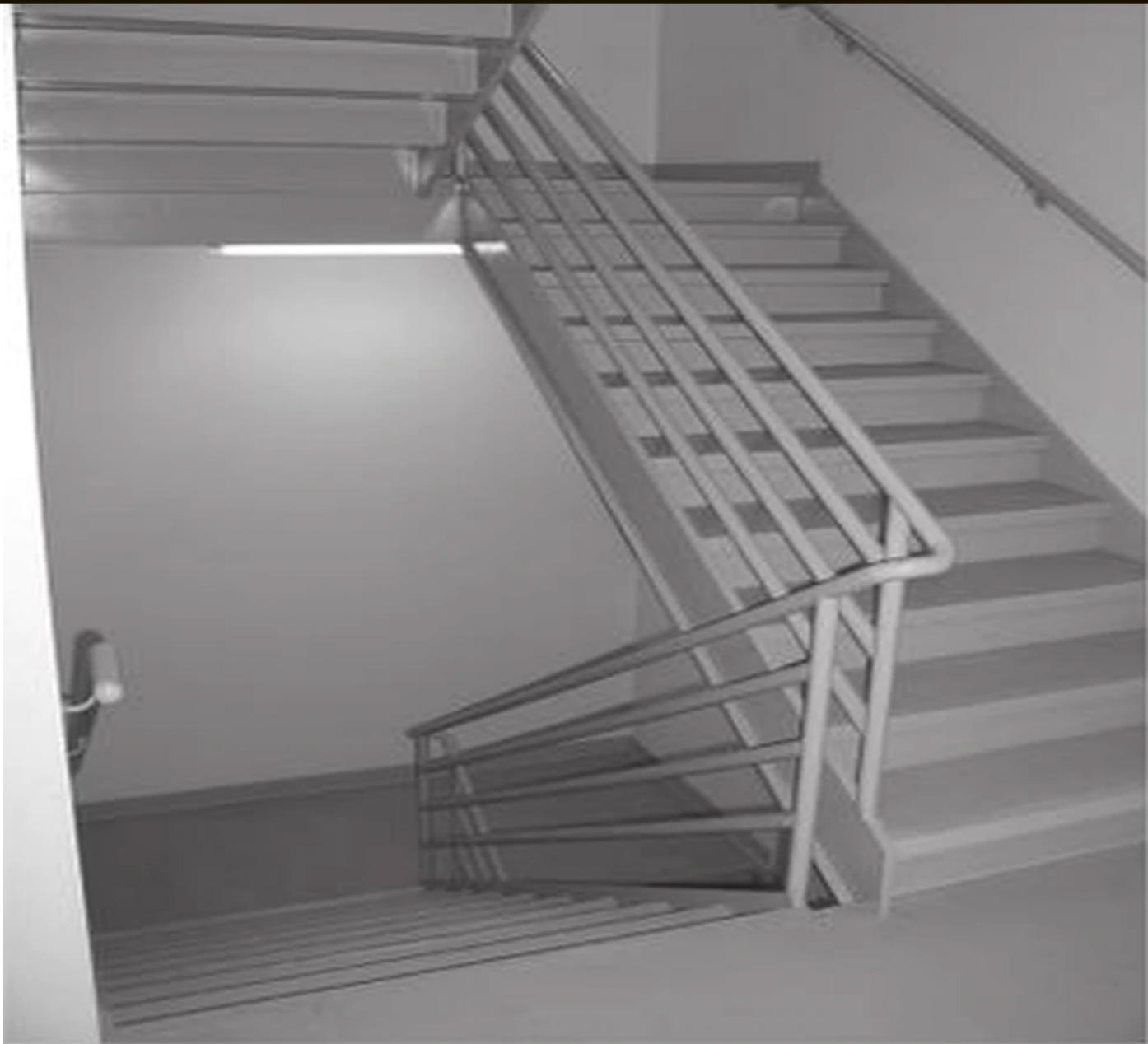
Example: RVL-24-26-MV-930-NS

RVL	24	26	MV	CRI	30	30
<b>Series</b> RVL LED Ringed Light Vanity	<b>Form Factor</b> 24- 24" Length <sup>2,3</sup> 36- 36" Length <sup>2,3</sup> 48- 48" Length <sup>2,3</sup>	<b>Rated Wattage</b> <u>24" Housing</u> 17- 17W, 2000 Lumens <u>36" Housing</u> 26- 26W, 2600 Lumens <sup>3</sup> <u>48" Housing</u> 34- 34W, 3400 Lumens <sup>3</sup>	<b>Driver Type</b> 120- 120V	<b>CRI</b> 9 90+CRI	<b>Color Temp</b> 30 3000K <sup>3</sup> 40 4000K <sup>3</sup>	<b>Finish</b> ORB- Oil Rubbed Bronze NS- Nickel Statin

Specifications and Dimensions subject to change without notice

<sup>1</sup> Made to order items. Minimum 90 day lead time. Minimum 500 order quantity.  
<sup>2</sup> Energy star listed





GlobalLux  
LIGHTING

# Stairwell Fixtures



CCT Adjustable **LED** Stairwell Fixture  
SWL Series

# High Performance Design Can Customize To Your Environment

## Battery Backup

Optional battery backup available for emergency egress applications.

## Housing

Rugged construction, solid die-formed, cold-rolled steel housing.

## High efficiency LED'S

Long-Life LED's 60,000 hours at L80 with projected life over 100,000 hours for reduced life cycle maintenance costs.

## CCT Switch

CCT Switch Technology can accommodate multiple color temperatures, from the warmest to the coolest tones of white. CCT can be adjusted to either 3000K, 4000K, or 5000K.

## Lens

High grade polycarbonate lens and a one-piece fabricated steel body.



### COLOR TEMPERATURE ADJUSTMENT SETTING

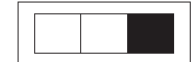
3000K 3500K 4000K



3000K 3500K 4000K



3000K 3500K 4000K



## SWL Wattage Comparison

Warehouse facilities, office areas, gymnasiums, grocery stores, parking garages



**34W**  
**4,420 Lumens**

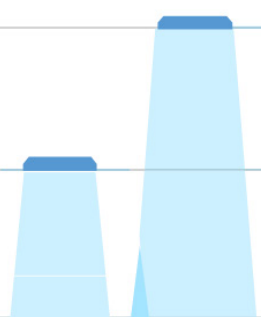
**Conventional Fluorescent**

2 Lamps T8 or 1 Lamp T5  
**50W**

Office Area, grocery stores, parking garages

**17W**  
**2,210 Lumens**

2 Lamps T8  
**34W**



# Ordering Information

## Dimensions



SWL-2-17-MVD-830/35/40    24L"x 4.5"Wx 2.5"H  
 SWL-4-34-MVD-830/35/40    48"Lx 4.5"Wx 2.5"H

## Specification Features



### Construction

Rugged construction, solid die formed, cold-rolled steel housing. All fixture surfaces powder coated after fabrication. Frosted acrylic diffusers provide even consistent light while reducing glare. Lens design and materials provide uniform appearance without pixelation.

### Qualifications

All luminaires are built to UL 1598 and 2108 standards, and bear appropriate ETL labels. Damp location labeling is standard. Emergency equipped fixtures labeled UL924. Adheres to LM70, LM80, and TM21 industry standards. DesignLights Consortium® (DLC) qualified product. Not all models of this product may be DLC qualified. Please check the DLC Qualified Products List at [www.designlights.org/QPL](http://www.designlights.org/QPL) to confirm which models are qualified.

### Electrical

Optional 0-10V continuous dimming driver that works with any standard 0-10V control/dimmer. Long-Life LED's 60,000 hours at L80 with projected life over 100,000 hours for reduced life cycle maintenance costs. Standard CCT switch to adjust from 3000K, 4000K, or 5000K.

### Installation

Suitable for wall or ceiling mounting, vertical or horizontal.

### Warranty

5-year Limited Warranty. See warranty documentation for more information.

### Options

Optional On/Off or Bi-Level Motion Sensor, high voltage transformers, emergency battery backups.

### SWL Series

#### 2' Housing

17W (2,210 Lumens)

#### 4' Housing

34W (4,420 Lumens)

Rated Life 60,000 hours  
 Limited Warranty 5 years  
 Efficacy up to 130 LPW  
 Continuous Dimming



### Quick Ship/ DLC Listed

\*Available first quarter of 2020

SWL-2-17-MVD-830/35/40

SWL-4-34-MVD-830/35/40

## Ordering Information

Example: SWL-2-17-MVD-830/35/40

SWL	2	17	MVD	8	30/35/40
<b>Series</b> SWL LED Stairwell Fixture	<b>Form Factor</b> 2- 24" Length <sup>2</sup> 4- 48" Length <sup>2</sup>	<b>Rated Wattage</b> <u>2' Housing</u> 17- 17W (2,210 Lumens) <sup>2</sup> <u>4' Housing</u> 34- 34W (4,420 Lumens) <sup>2</sup>	<b>Driver Type</b> MVD- 120-277V; 0-10V Dimming <sup>2</sup>	<b>CRI</b> 8 80+ CRI <sup>2</sup>	<b>Color Temp</b> 30/35/40 3000K/3500K/4000K <sup>2</sup> Adjustable Switch
<b>Options</b>					
<b>Emergency Backup</b> EML8 800lm EML16 1600lm		<b>Controls</b> MOS- Integral Microwave Sensor, On/Off MOSB- Integral Bi-Level Microwave Sensor		<b>Accessories</b> N/A	

Specifications and Dimensions subject to change without notice

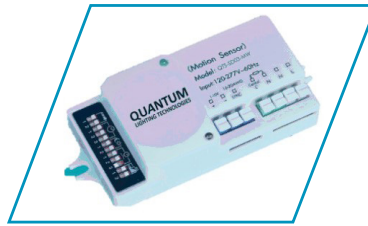
<sup>1</sup> Made to order items. Minimum 90 day lead time. Minimum 500 order quantity.

# Adders and Accessories



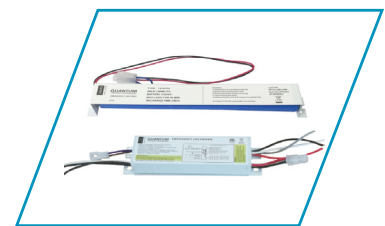
## Integral Microwave Sensor, On/Off

An economical fixture mounted sensor utilizing passive infrared technology turns the fixture On/Off.



## Integral Bi-Level Microwave Sensor

Part of the Globalux family of Intelligent sensors that dims the fixture to either 10,20,30, or 50% of full light output for safety and code compliance, and automatically switches to full illumination when the space is occupied.



## Emergency Battery

The emergency battery back-up provides 90 minutes of power to your fixture in the event of an emergency.

### Emergency Battery Back-up

- EML8**            800 Lumen Emergency Battery
- EML16**        1600 Lumen Emergency Battery

### Motions Sensors

- MOS**                            Integral Mic. Sensor On/Off
- MOSB**                        Integral Mic. Sensor Bi-Level

### Voltage

- MVD**                            120-277V; 0-10V Dimming



CCT Tuneable [LED](#) Wall Bracket/Stairwell  
**GlobalLux**  
LIGHTING  
LWLV Series



# High Performance Design Can Customize To Your Environment

## Lens

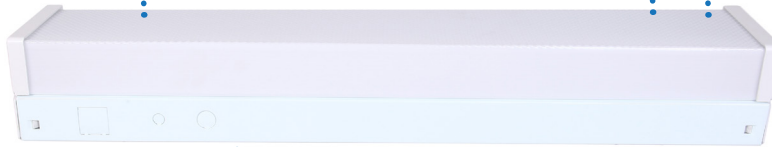
Full-length U-wrap Acrylic lens and a one-piece fabricated steel body.

## High efficiency LED'S

Long-Life LED's 60,000 hours at L80 with projected life over 100,000 hours for reduced life cycle maintenance costs.

## Sensor capabilities

Optional On/Off, Dimming, Bi-Level configurations for networked control. Servicing 10'-45' mounting heights with aisle or 360 detection.



## Battery Backup

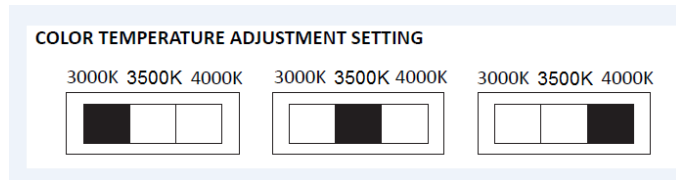
Optional battery backup available for emergency egress applications.

## Housing

Rugged construction, solid die-formed, cold-rolled steel housing.

## CCT Switch

CCT Switch Technology can accommodate multiple color temperatures, from the warmest to the coolest tones of white. CCT can be adjusted to either 3000K, 4000K, or 5000K.



## LWLV Wattage Comparison

Workshops, garages, multi-family homes

Model: LWLV-4-34-MVD-830/35/40

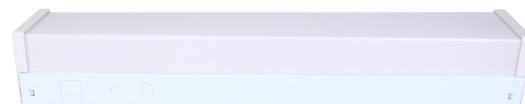
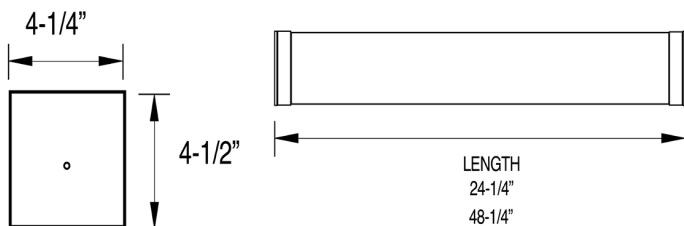
Storage rooms, hallways

Model: LWLV-2-17-MVD-830/35/40

	<b>GlobalLux</b> LIGHTING	Conventional Fluorescent
Workshops, garages, multi-family homes Model: LWLV-4-34-MVD-830/35/40	34W 4,420LM	2 Lamps T8 50W
Storage rooms, hallways Model: LWLV-2-17-MVD-830/35/40	17W 2,210LM	2 Lamps T8 40W

# Ordering Information

## Dimensions



### LWLV Series

#### 2' Housing

17W (2,210 Lumens)

#### 4' Housing

34W (4,420 Lumens)



## Specification Features

### Construction

Rugged construction, solid die formed, cold-rolled steel housing. All fixture surfaces powder coated after fabrication. Frosted acrylic diffusers provide even consistent light while reducing glare. Lens design and materials provide uniform appearance without pixelation.

### Qualifications

All luminaires are built to UL 1598 and 2108 standards, and bear appropriate ETL labels. Damp location labeling is standard. Emergency equipped fixtures labeled UL924. Adheres to LM70, LM80, and TM21 industry standards. DesignLights Consortium® (DLC) qualified product. Not all models of this product may be DLC qualified. Please check the DLC Qualified Products List at [www.designlights.org/QPL](http://www.designlights.org/QPL) to confirm which models are qualified.

### Electrical

Equipped standard with 0-10V continuous dimming driver. Optional 0-10V continuous dimming driver that works with any standard 0-10V control/dimmer. Long-Life LED's 60,000 hours at L80 with projected life over 100,000 hours for reduced life cycle maintenance costs. Standard CCT switch to adjust from 3000K, 4000K, or 5000K.

### Installation

Suitable for wall or ceiling mounting, vertical or horizontal.

### Warranty

5-year Limited Warranty. See warranty documentation for more information.

### Options

Optional On/Off or Bi-Level Motion Sensor, high voltage transformers, emergency battery backups.

Rated Life 60,000 hours  
Limited Warranty 5 years  
Efficacy up to 130 LPW  
Continuous Dimming



### Quick Ship/ DLC Listed

\*Available first quarter of 2020

LWLV-2-17-MVD-830/35/40

LWLV-4-34-MVD-830/35/40

## Ordering Information

Example: LWLV-2-17-MVD-830/35/40

LWLV	2	17	MVD	8	30/35/40
<b>Series</b> LWLV CCT AdjustableLED Wall Bracket/ Stairwell Luminaire	<b>Form Factor</b> 2- 24" Length <sup>2</sup> 4- 48" Length <sup>2</sup>	<b>Rated Wattage</b> <u>2' Housing</u> 17- 17W (2,210 Lumens) <sup>2</sup> <u>4' Housing</u> 34- 34W (4,420 Lumens) <sup>2</sup>	<b>Driver Type</b> MVD- 120-277V; 0-10V Dimming <sup>2</sup>	<b>CRI</b> 8 80+ CRI <sup>2</sup>	<b>Color Temp</b> 30/35/40 3000K/3500K/4000K <sup>2</sup> Adjustable Switch
			<b>Emergency Backup</b> EML8 800lm EML16 1600lm	<b>Controls</b> MOS- Integral Microwave Sensor, On/Off MOSB- Integral Bi-Level Microwave Sensor	<b>Accessories</b> N/A

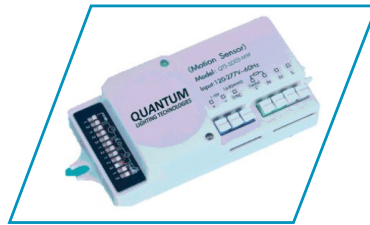


# Adders and Accessories



## Integral Microwave Sensor, On/Off

An economical fixture mounted sensor utilizing passive infrared technology turns the fixture On/Off.



## Integral Bi-Level Microwave Sensor

Part of the Globalux family of Intelligent sensors that dims the fixture to either 10,20,30, or 50% of full light output for safety and code compliance, and automatically switches to full illumination when the space is occupied.



## Emergency Battery

The emergency battery back-up provides 90 minutes of power to your fixture in the event of an emergency.

### Emergency Battery Back-up

- EML8**            800 Lumen Emergency Battery
- EML16**        1600 Lumen Emergency Battery

### Motions Sensors

- MOS**                            Integral Mic. Sensor On/Off
- MOSB**                        Integral Mic. Sensor Bi-Level

### Cords, Plugs and Whips

- FW3**                            3FT Flex 18/4
- FW4**                            4FT Flex 18/4

### Voltage

- MVD**                            120-277V; 0-10V Dimming



GlobalLux  
LIGHTING

Garage & Back of House Lighting



CCT Adjustable Vaportight LED Strip  
LVTS Series

# High Performance Design Can Customize To Your Environment

## Battery Backup

Battery backup available for emergency egress applications.

## High Efficacy LEDs

Performance ranges up to 100 LPW. Long-life 60,000 hour LED's at L80 with projected life over 100,000 hour at L70 hours for reliable performance and minimal maintenance.

## Lens

High impact Frosted polycarbonate Lens provides uniform appearance without LED pixelation.

## Latches

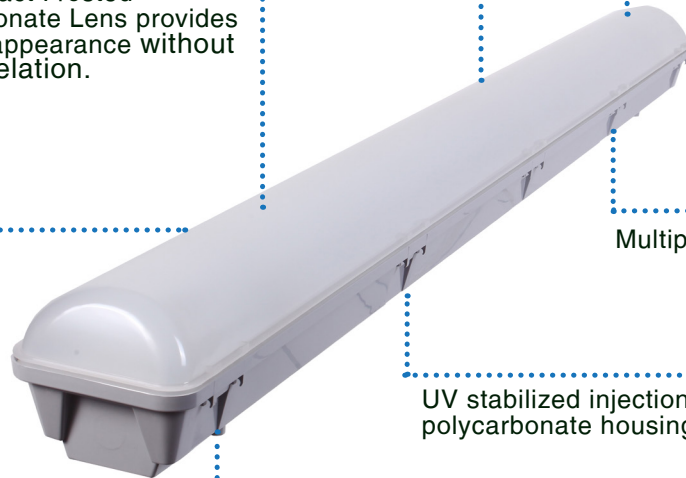
Multiple stainless steel latches.

## CCT Switch

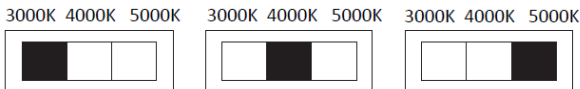
CCT Switch Technology can accommodate multiple color temperatures, from the warmest to the coolest tones of white. CCT can be adjusted to either 3000K, 4000K, or 5000K.

## Housing

UV stabilized injection molded, impact resistant, polycarbonate housing.



### COLOR TEMPERATURE ADJUSTMENT SETTING



## Hassle-Free Mounting

Quick mounting clips included. Suitable for suspension or surface mounting.

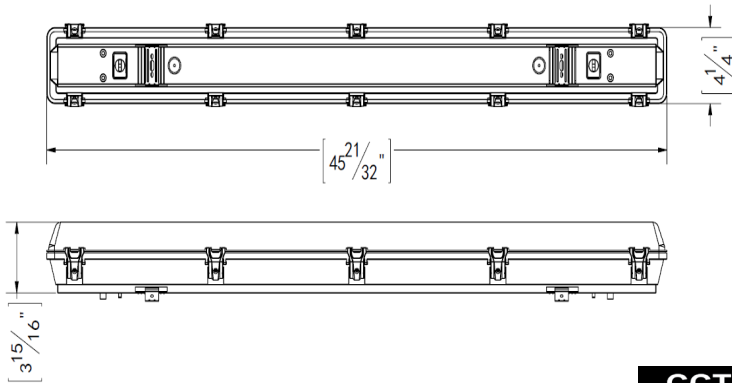


## LVTS Wattage Comparison

	GlobalLux LIGHTING	Conventional Fluorescent
Parking structures, airports, tunnels, stairwell, car wash operations	55W 7,150 Lumens	4Lamps T8 128W
Parking structures, airports, tunnels, stairwell, car wash operations	45W 5,850 Lumens	3Lamps T8 96W-104W
Parking structures, airports, tunnels, stairwell, car wash operations	34W 4,420 Lumens	2Lamps T8 64W

# Ordering Information

## Dimensions



### LVTS Series

#### 48" Housing

34W (4,420 Lumens)

45W (5,850 Lumens)

#### 96" Housing

55W (7,150 Lumens)

## Specification Features



### Construction

UV stabilized, injection molded, impact resistant, polycarbonate housing. 20 gauge steel channel cover, lens design and materials provide uniform appearance without pixelation.

### Certification

All luminaires are built to UL 1598 and 2108 standards, and bear appropriate ETL labels. Wet location labeling is standard. Emergency equipped fixtures labeled UL924. Adheres to LM70, LM80, and TM21 industry standards. DesignLights Consortium® (DLC) DLC qualified product. Not all models of this product may be DLC qualified. Please check the DLC Qualified Products List at [www.designlights.org/QPL](http://www.designlights.org/QPL) to confirm which models are qualified.

### Warranty

5-year Limited Warranty. See warranty documentation for more information.

### Electrical

Equipped standard with 0-10V continuous dimming driver that works with any standard 0-10V control/dimmer. Long-Life LED's 60,000 hours at L80 with projected life over 100,000 hours for reduced life cycle maintenance costs Luminaire can be ceiling or suspend mounted. Power connection is easily accommodated through pre-drilled holes at each end, watertight plugs ship standard on each end. CCT switch to adjust from 3000K, 4000K, or 5000K.

### Installation

Quick mounting clips included. Suitable for suspension or surface mounting.

### Options

Optional On/Off Motion Sensor, high voltage transformer, emergency battery backups, whips and cords.

Rated Life 60,000 hours  
Limited Warranty 5 years  
Efficacy up to 130 LPW  
Continuous Dimming



Quick Ship  
\*Available first quarter of 2020

LVTS-34-MVD-830/40/50  
LVTS-45-MVD-830/40/50  
LVTS-8-55-MVD-830/40/50

## Ordering Information

Example: LVTS-45-MVD-830/40/50-OS

LVTS	45	MVD	8	30/40/50
<b>Series</b> <b>LVTS</b> CCT Adjustable Vaportight LED Strip	<b>Rated Wattage</b> <u>48" Housing</u> 34- 34W (4,420 Lumens) <sup>2</sup> 45- 45W (5,850 Lumens) <sup>2</sup> <u>96" Housing</u> 8-55- 55W (7,150 Lumens) <sup>2</sup>	<b>Driver Type</b> MV- 120-277V <sup>1</sup> MVD- 120-277V; 0-10V Dimming <sup>2</sup> HVD-347-480V,0-10V Dimming <sup>1</sup> HV-347-480V <sup>1</sup>	<b>CRI</b> 8 80+ CRI	<b>Color Temp</b> 30/40/50 3000K, 4000K 5000 K <sup>2</sup> Adjustable Switch
<b>Options</b>				
		<b>Emergency Backup</b> EML8 800lm EML16 1600lm	<b>Controls</b> OS- Fixture Mounted Occupancy Sensor, On/Off MOS- Integral Microwave Sensor, On/Off MOSB-Integral Bi-Level Microwave Sensor MOSB-FM- Microwave Bi-Level Sensor Fixture mount	<b>Accessories</b> FW3 6' 3 Wire Fixture Whip FW4 6' 4 Wire Fixture Whip

Specifications and Dimensions subject to change without notice

<sup>1</sup> Made to order items. Minimum 90 day lead time. Minimum 500 order quantity.  
<sup>2</sup> DLC Listed

# Adders Options & Accessories



### Fixture Mounted Occupancy, On/Off

An economical fixture mounted sensor utilizing passive infrared technology turns the fixture On/Off.



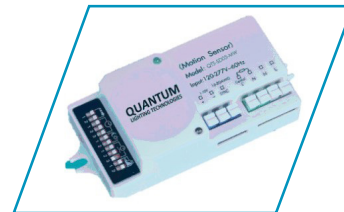
### Microwave Bi-Level Sensor Fixture Mount

An IP65 and remote capable part of the Globalux family of Intelligent sensors that dims the fixture to either 10,20,30, or 50% of full light output for safety and code compliance, and automatically switches to full illumination when the space is occupied.



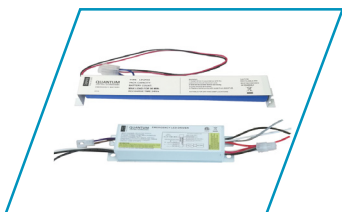
### Integral Microwave Sensor, On/Off

An economical fixture mounted sensor utilizing passive infrared technology turns the fixture On/Off.



### Integral Bi-Level Microwave Sensor

Part of the Globalux family of Intelligent sensors that dims the fixture to either 10,20,30, or 50% of full light output for safety and code compliance, and automatically switches to full illumination when the space is occupied.



### Emergency Battery

The emergency battery back-up provides 90 minutes of power to your fixture in the event of an emergency.



### High Voltage Transformers

High voltage transformers allow the fixture to receive a higher power input of 347V-480V.



### Cords & Plug Option

Standard 6ft cord with custom lengths and plugs available for wiring fixture.



### Fixture Whips

Armored cable fixture whips used for lighting and power distribution.

## Emergency Battery Back-up

**EML8**  
Battery

800 Lumen Emergency

## Motions Sensors

**OS**

Fixture Mounted Occupancy Sensor

**MOS**

Integral Mic. Sensor On/Off

**MOSB**

Integral Mic. Sensor Bi-Level

**MOSB-FM**

Fixture Mounted Mic. Sensor Bi-Level

## Cords, Plugs and Whips

**FW3**

3FT Flex 18/4

**FW4**

4FT Flex 18/4

## Voltage

**MV**

120-277V

**MVD**

120-277V; 0-10V Dimming

**HVD**

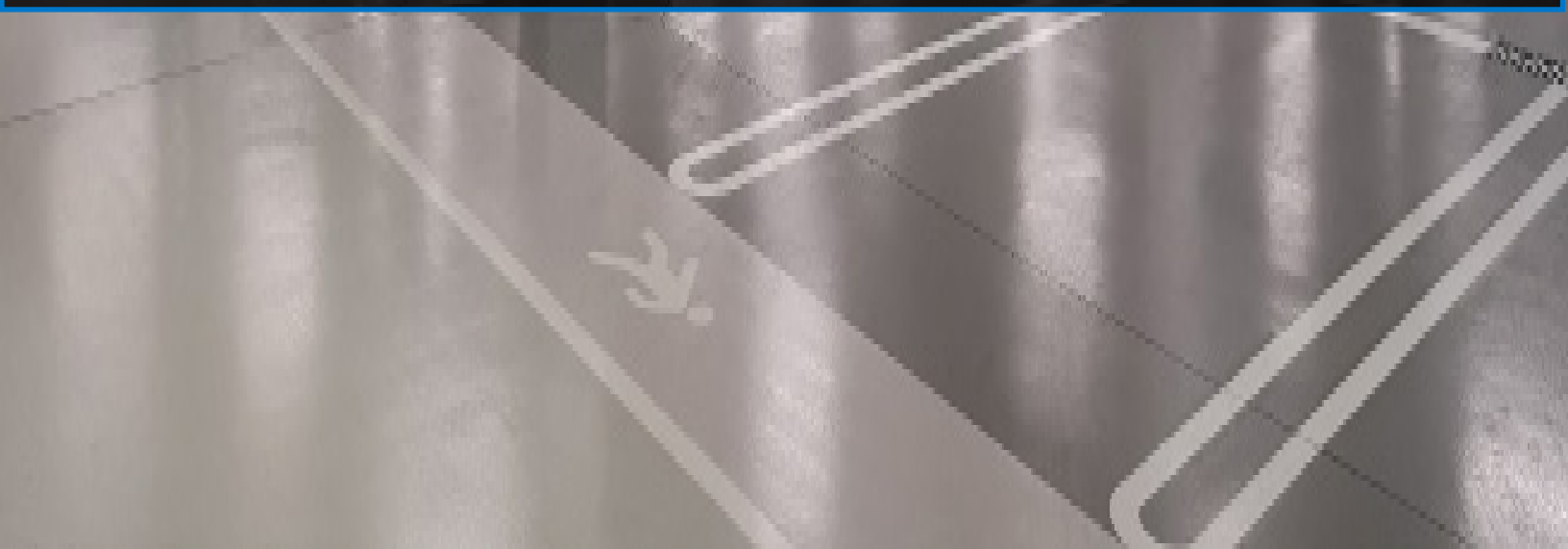
347-480V; 0-10V Dimming

**HV**

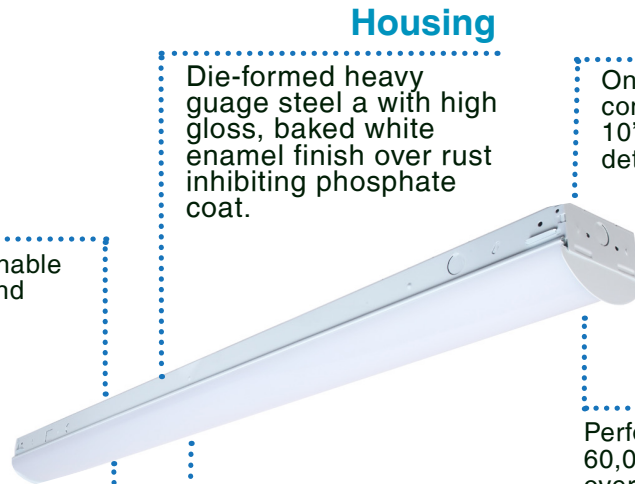
347-480V



CCT Adjustable [LED](#) Strip Light  
LCS Series



# High Performance Design Can Customize To Your Environment



## Knockouts

Multiple knockouts enable flexible installation and mounting.

## Lens

Stylish frosted, Impact resistant frosted Polycarbonate lens provides ample brightness and even illumination.

## Housing

Die-formed heavy guage steel a with high gloss, baked white enamel finish over rust inhibiting phosphate coat.

## Optional Sensor Capabilities

On/Off, Bi-Level Dimming, wireless configurations for networked controls. Servicing 10'-45' mounting heights with aisle or 360 detection.

## High Efficacy LEDs

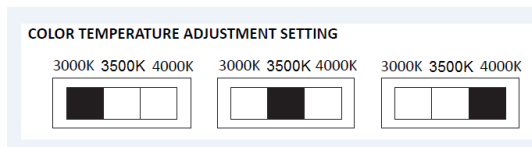
Performance ranges up to 106 LPW. Long-life 60,000 hour LED's at L80 with projected life over 100,000 hour at L70 hours for reliable performance and minimal maintenance.

## Battery Backup

Battery backup available for emergency egress applications.

## CCT Switch

CCT Switch Technology can accommodate multi color temperatures from warmest to coolest tones of white. CCT can be adjusted to either 3000K, 4000K or 5000K.



## LCS Wattage Comparison

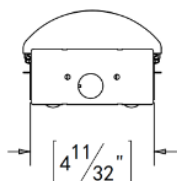
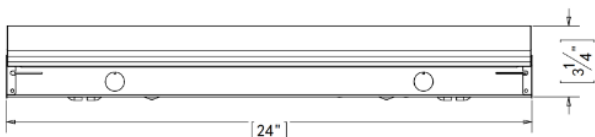
	GlobalLux LIGHTING	Conventional Fluorescent
Warehouse facilities, office areas, gymnasiums, grocery stores, parking garages	104W 11,000 Lumens	4 Lamps T8 128W
Warehouse facilities, office areas, gymnasiums, grocery stores, parking garages	68W 7,200 Lumens	3Lamps T8 or 2 Lamps T5 96W-104W
Warehouse facilities, office areas, gymnasiums, grocery stores, parking garages	52W 5,000 Lumens	2-3 Lamps T8 64W-96W
office areas, gymnasiums, grocery stores, parking garages	40W 3,520 Lumens	2 Lamps T8 or 1 Lamp T5 50W-64W
	17W 1,760 Lumens	2 Lamps T8 34W



# Ordering Information



## Dimensions



### LCS Series

- 24" Housing**  
17W (1,760 Lumens)
- 48" Housing**  
40W (3,520 Lumens)  
52W (5,000 Lumens)
- 96" Housing**  
68W (7,200 Lumens)  
104W (11000 Lumens)

## Specification Features



### Construction

Housing, wireway cover and ends are die-formed heavy gauge steel with high gloss, baked white enamel finish over rust inhibiting phosphate coat. Housing and wireway cover act as a heat sink, maximizing the life of the LEDs and power supplies. Knockouts provided on back, ends, and sides. Diffuser Lens reduces glare and improves occupant comfort while maintaining high efficiency emission.

### Qualifications

All luminaires are built to UL 1598 and 2108 standards, and bear appropriate ETL labels. Damp location labeling is standard. Emergency equipped fixtures labeled UL924. Adheres to LM70, LM80, and TM21 industry standards. DesignLights Consortium® (DLC) qualified product. Not all product variations listed are DLC qualified. Please visit the DLC Qualified Products List at [www.designlights.org/QPL](http://www.designlights.org/QPL) to confirm which models are qualified.

### Electrical

Equipped standard with fixed output driver. Optional 0-10V continuous dimming driver that works with any standard 0-10V control/dimmer. Long-Life LED's 60,000 hours at L80 with projected life over 100,000 hours for reduced life cycle maintenance costs. Standard CCT switch to adjust from 3000K, 4000K, and 5000K.

### Installation

Suitable for surface mounting, suspension, or stem mounting, individually or in continuous rows.

### Warranty

5-year Limited Warranty. See warranty documentation for more information.

### Options

Optional On/Off or Bi-Level Motion Sensor, high voltage transformers, emergency battery backups, whips and cords.

- Rated Life 60,000 hours
- Limited Warranty 5-years
- Efficacy Up to 106 LPW
- Continuous Dimming



### Quick Ship/ DLC Listed

- LCS-2-17-MVD-830/40/50
- LCS-4-40-MVD-830/40/50
- LCS-4-52-MVD-830/40/50
- LCS-8-68-MVD-830/40/50
- LCS-8-104-MVD-830/40/50

## Ordering Information

Example Model Number: LCS-4-52-MVD-830/40/50

LCS	4	52	MVD	8	50
<b>Series</b> LCS LED Channel Strip	<b>Length</b> 2- 24" Length <sup>2</sup> 4- 48" Length <sup>2</sup> 8- 96" Length <sup>2</sup>	<b>Rated Wattage</b> <b>24" Housing</b> 17-17W (1,760 Lumens) <sup>2</sup> <b>48" Housing</b> 40- 40W (3,520 Lumens) <sup>2</sup> 52- 52W (5,000 Lumens) <sup>2</sup> <b>96" Housing</b> 68- 68W (7,200 Lumens) <sup>2</sup> 104- 104W (11000 Lumens) <sup>2</sup>	<b>Driver Type</b> MV- 120-277V <sup>2</sup> MVD-120-277V; 0-10V Dimming <sup>2</sup> HVD-347-480V,0-10V Dimming <sup>1</sup> HV-347-480V <sup>1</sup>	<b>CRI</b> 8 80+ CRI <sup>2</sup>	<b>Color Temp</b> 30/40/50- 3000/4000/5000 Kelvin
<b>Options</b>					
		<b>Emergency Backup</b> EML8 800lm EML16 1600lm	<b>Control</b> MOS- Integral Microwave Sensor, On/Off OS- Fixture Mounted Occupancy Sensor, On/Off MOSB- Integral Bi-Level Microwave Sensor MOSB-FM- Fixture Mounted Bi-Level Microwave Sensor OSBL- Fixture Mounted Occupancy Sensor, Bi-Level		<b>Accessories</b> FW3- 6' 3 Wire Fixture whip FW4- 6' 4 Wire Fixture Whip

Specifications and Dimensions subject to change without notice

<sup>1</sup> Made to order items. Minimum 90 day lead time. Minimum 500 order quantity.

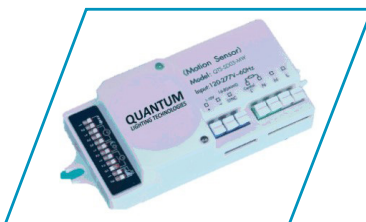
<sup>2</sup> DLC Listed

# Adders and Accessories



## Integral Microwave Sensor, On/Off

An economical fixture mounted sensor utilizing passive infrared technology turns the fixture On/Off.



## Integral Bi-Level Microwave Sensor

Part of the Globalux family of Intelligent sensors that dims the fixture to either 10,20,30, or 50% of full light output for safety and code compliance, and automatically switches to full illumination when the space is occupied.



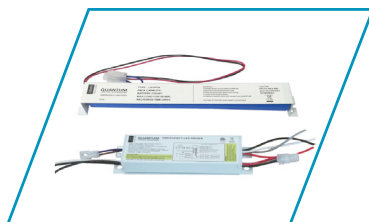
## Fixture Mounted Occupancy, On/Off

An economical fixture mounted sensor utilizing passive infrared technology turns the fixture On/Off.



## Fixture Mounted Occupancy Sensor, Bi-Level

Fixture mounted sensor utilizing passive infrared technology that dims the fixture to either 10,20,30, or 50% of full light output for safety and code compliance, and automatically switches to full illumination when the space is occupied.



## Emergency Battery

The emergency battery back-up provides 90 minutes of power to your fixture in the event of an emergency.

### Emergency Battery Back-up

<b>EML8</b>	800 Lumen Emergency Battery
<b>EML16</b>	1600 Lumen Emergency Battery

### Motions Sensors

<b>OS</b>	Fixture Mounted Occ. Sensor On/Off
<b>MOS</b>	Integral Mic. Sensor On/Off
<b>MOSB</b>	Integral Mic. Sensor Bi-Level
<b>MOSB-FM</b>	Fixtrure Monnted Bi-level Mic Sensor

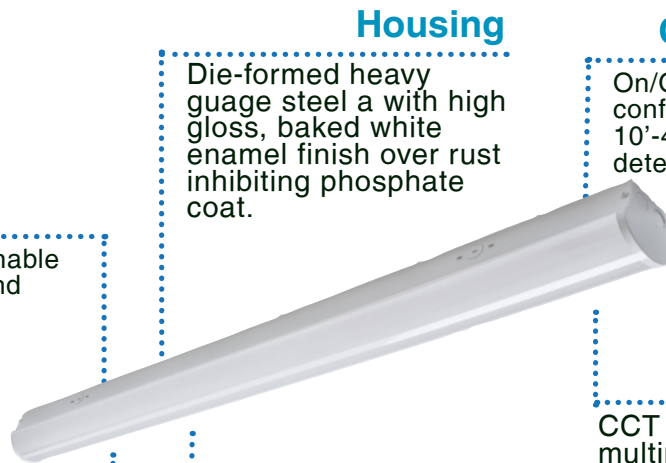
### Voltage

<b>MVD</b>	120-277V; 0-10V Dimming
------------	-------------------------



CCT Adjustable **LED** Narrow Strip  
LNS Series

# High Performance Design Can Customize To Your Environment



### Housing

Die-formed heavy gauge steel with high gloss, baked white enamel finish over rust inhibiting phosphate coat.

### Optional Sensor Capabilities

On/Off, Bi-Level Dimming, wireless configurations for networked controls. Servicing 10'-45' mounting heights with aisle or 360 detection.

### Knockouts

Multiple knockouts enable flexible installation and easy mounting.

### CCT Switch

CCT Switch Technology can accommodate multiple color temperatures, from the warmest to the coolest tones of white. CCT can be adjusted to either 3000K, 4000K, or 5000K.

### Lens

Stylish frosted, Impact resistant frosted Polycarbonate lens provides ample brightness and even illumination.

### Battery Backup

Battery backup available for emergency egress applications.

#### COLOR TEMPERATURE ADJUSTMENT SETTING

3000K 4000K 5000K



3000K 4000K 5000K



3000K 4000K 5000K



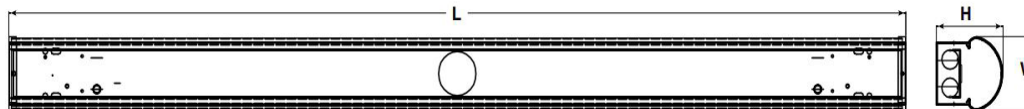
## LNS Wattage Comparison

	GlobalLux LIGHTING	Conventional Fluorescent
Warehouse facilities, office areas, gymnasiums, grocery stores, parking garages	90W 11,700 Lumens	4 Lamps T8 128W
Warehouse facilities, office areas, gymnasiums, grocery stores, parking garages	45W 5,850 Lumens	3 Lamps T8 or 2 Lamps T5 96W-104W
Warehouse facilities, office areas, gymnasiums, grocery stores, parking garages	34W 4,420 Lumens	2-3 Lamps T8 64W-96W
office areas, gymnasiums, grocery stores, parking garages	26W 3,380 Lumens	2 Lamps T8 or 1 Lamp T5 50W-64W
	17W 2,210 Lumens	2 Lamps T8 34W

# Ordering Information

## Dimensions

L- 25.87" / 47.99" / 92.44"  
H- 3.65"  
W- 3.56"



### LNS Series

**24" Housing**  
17W (2,210 Lumens)  
**48" Housing**  
26W (3,380 Lumens)  
34W (4,420 Lumens)  
45W (5,850 Lumens)  
**96" Housing**  
55W (7,150 Lumens)  
90W (11,700 Lumens)

Rated Life 60,000 hours  
Limited Warranty 5-years  
Efficacy Up to 130 LPW  
Continuous Dimming



### Quick Ship/ DLC Listed

\*Available first quarter of 2020

LNS-2-17-MVD-830/40/50  
LNS-4-26-MVD-830/40/50  
LNS-4-34-MVD-830/40/50  
LNS-4-45-MVD-830/40/50  
LNS-8-55-MVD-830/40/50  
LNS-8-90-MVD-830/40/50

## Specification Features



### Construction

Rugged Construction, solid die formed, cold-rolled steel housing. All fixture surfaces powder coated after fabrication. Frosted acrylic diffusers provide even consistent light while reducing glare. Lens design and materials provide uniform appearance without pixelation.

### Qualifications

All luminaires are built to UL 1598 and 2108 standards, and bear appropriate ETL labels. Damp location labeling is standard. Emergency equipped fixtures labeled UL924. Adheres to LM70, LM80, and TM21 industry standards. DesignLights Consortium® (DLC) qualified product. Not all product variations listed are DLC qualified. Please visit the DLC Qualified Products List at [www.designlights.org/QPL](http://www.designlights.org/QPL) to confirm which models are qualified.

### Warranty

5-year Limited Warranty. See warranty documentation for more information.

### Electrical

Equipped standard with 0-10V continuous dimming driver that works with any standard 0-10V control/dimmer. Long-Life LED's 60,000 hours at L80 with projected life over 100,000 hours for reduced life cycle maintenance costs. Standard CCT switch to adjust from 3000K, 44000K or 5000K.

### Installation

Suitable for surface mounting, suspension, or stem mounting, individually or in continuous rows.

### Options

Optional On/Off or Bi-Level Motion Sensor, high voltage transformers, emergency battery backups, whips and cords.

## Ordering Information

Example Model Number: LNS-4-26-MVD-850

LNS	4	26	MVD	8	30/40/50
<b>Series</b> LNS CCT Adjustable LED Narrow Strip	<b>Length</b> 2- 24" Length <sup>2</sup> 4- 48" Length <sup>2</sup> 8- 96" Length <sup>2</sup>	<b>Rated Wattage</b> <b>24" Housing</b> 17-17W (2,210 Lumens) <sup>2</sup> <b>48" Housing</b> 26- 26W (3,380 Lumens) <sup>2</sup> 34- 34W (4,420 Lumens) <sup>2</sup> 45- 45W (5,850 Lumens) <sup>2</sup> <b>96" Housing</b> 55- 55W (7,150 Lumens) <sup>2</sup> 90- 90W (11,700 Lumens) <sup>2</sup>	<b>Driver Type</b> MVD-120-277V; 0-10V Dimming <sup>2</sup> HVD-347-480V,0-10V Dimming <sup>1</sup>	<b>CRI</b> 8 80+ CRI <sup>2</sup>	<b>Color Temp</b> 30/40/50- 3000K, 4000K, 5000K Adjustable
<b>Options</b>					
<b>Emergency Backup</b> EML8 800lm EML16 1600lm		<b>Control</b> MOS- Integral Microwave Sensor, On/Off OS- Fixture Mounted Occupancy Sensor, On/Off MOSB- Integral Bi-Level Microwave Sensor MOSB-FM- Fixture Mounted Bi-Level Microwave Sensor OSBL- Fixture Mounted Occupancy Sensor, Bi-Level		<b>Accessories</b> FW3- 6' 3 Wire Fixture whip FW4- 6' 4 Wire Fixture Whip	

Specifications and Dimensions subject to change without notice

<sup>1</sup> Made to order items. Minimum 90 day lead time. Minimum 500 order quantity.

<sup>2</sup> DLC Listed

# Adders Options & Accessories



### Fixture Mounted Occupancy, On/Off

An economical fixture mounted sensor utilizing passive infrared technology turns the fixture On/Off.



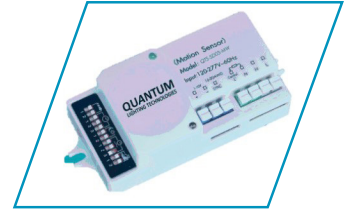
### Microwave Bi-Level Sensor Fixture Mount

An IP65 and remote capable part of the Globalux family of Intelligent sensors that dims the fixture to either 10,20,30, or 50% of full light output for safety and code compliance, and automatically switches to full illumination when the space is occupied.



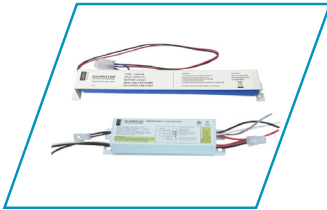
### Integral Microwave Sensor, On/Off

An economical fixture mounted sensor utilizing passive infrared technology turns the fixture On/Off.



### Integral Bi-Level Microwave Sensor

Part of the Globalux family of Intelligent sensors that dims the fixture to either 10,20,30, or 50% of full light output for safety and code compliance, and automatically switches to full illumination when the space is occupied.



### Emergency Battery

The emergency battery back-up provides 90 minutes of power to your fixture in the event of an emergency.



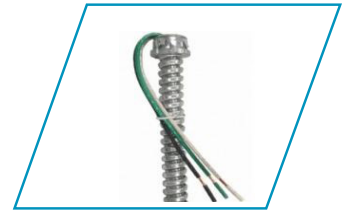
### High Voltage Transformers

High voltage transformers allow the fixture to receive a higher power input of 347V-480V.



### Cords & Plug Option

Standard 6ft cord with custom lengths and plugs available for wiring fixture.



### Fixture Whips

Armored cable fixture whips used for lighting and power distribution.

## Emergency Battery Back-up

**EML8**  
Battery

800 Lumen Emergency

## Motions Sensors

**OS**  
**MOS**  
**MOSB**  
**MOSB-FM**

Fixture Mounted Occupancy Sensor  
Integral Mic. Sensor On/Off  
Integral Mic. Sensor Bi-Level  
Fixture Mounted Mic. Sensor Bi-Level

## Cords, Plugs and Whips

**FW3**  
18/4

3FT Flex

**FW4**

4FT Flex

## Voltage

**MV**  
**MVD**  
**HVD**  
**HV**

120-277V  
120-277V; 0-10V Dimming  
347-480V; 0-10V Dimming  
347-480V

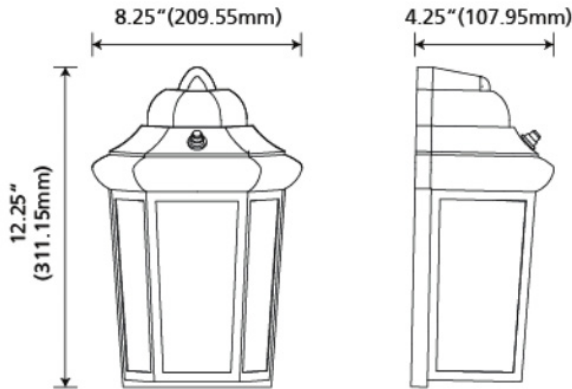


GlobalLux  
LIGHTING

Decorative Outdoor

# Ordering Information

## Dimensions



**DOW Series**

9W, 800 Lumens  
11W, 1100 Lumens



## Specification Features

### Construction

Rugged die cast aluminum housing withstands outdoor environments. Outer surface treated with durable power coating to provide resistance to corrosion, rust, weathering, and or degradation. Performance engineered internal heat dissipation fins provide superior thermal management for LED life and reliability.

### Qualifications

All luminaires are built to UL 1598 and 2108 standards, and bear appropriate ETL labels. Wet location labeling is standard. Emergency equipped fixtures labeled UL924. Adheres to LM70, LM80, and TM21 industry standards. ENERGY STAR® certified product (for 3000K and 4000K only). Dedicated 120V Models are FCC Title 47 CFR, Part 15, Class B for residential and commercial applications.

### Electrical

120V Driver operates at 60Hz.

### Installation

Designed for mounting on 4" electrical J-Box.

### Warranty

3-year limited warranty. See complete warranty for terms and exclusions. (Labor not included).

Rated Life 60,000 hours  
Limited Warranty 3 years  
Efficacy Up to 100 LPW

**Quick Ship**

Made To Order Only

## Ordering Information

Example:DOW-9-120-850

DOW	11	120	8	50	BL	P
<b>Series</b> DOW Decorative Outdoor Pocket Lantern	<b>Rated Wattage</b> 9-9W, 800 Lumens <sup>1</sup> 11-11W, 1100 Lumens <sup>1</sup>	<b>Driver Type</b> 120- 120V <sup>1</sup>	<b>CRI</b> 8 80+ CRI	<b>Color Temperature</b> 30 3000 K <sup>1</sup> 50 5000 K <sup>1</sup>	<b>Driver Finish</b> BL- Black <sup>1</sup>	<b>Options</b> P- Photocell <sup>1</sup>

Specifications and Dimensions subject to change without notice.

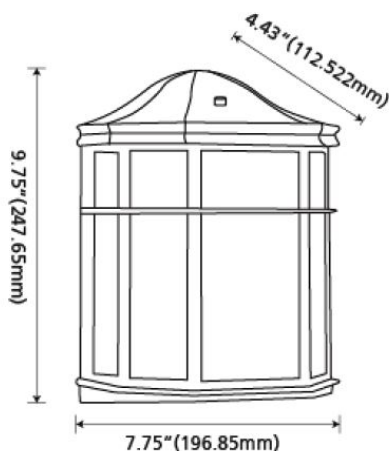
<sup>1</sup> Made to order items. Minimum 90 day lead time. Minimum 500 order quantity.

<sup>2</sup> Energy star listed



# Ordering Information

## Dimensions



### DOP Series

9W, 800 Lumens  
11W, 1100 Lumens



## Specification Features

### Construction

Rugged die cast aluminum housing withstands outdoor environments. Outer surface treated with durable power coating to provide resistant to corrosion, rust, weathering, and or degradation. Performance engineered internal heat dissipation fins provide superior thermal management for lens life and reliability. Lens design and materials provide uniform appearance without pixelation.

### Qualifications

All luminaires are built to UL 1598 and 2108 standards, and bear appropriate ETL labels. Wet location labeling is standard. Emergency equipped fixtures labeled UL924. Adheres to LM70, LM80, and TM21 industry standards. ENERGY STAR® certified product (for 3000K only). Dedicated 120V Models are FCC Title 47 CFR, Part 15, Class B for residential and commercial applications.

### Electrical

120V Driver operates at 60Hz.

### Installation

Designed for mounting on 4" electrical J-Box.

### Warranty

3-year Limited Warranty. See warranty documentation for more information.

Rated Life 50,000 hours  
Limited Warranty 3 years  
Efficacy Up to 100 LPW

### Quick Ship

DOP-9-120-830-BL

## Ordering Information

Example: DOP-9-120-830-BL

DOP	9	120	8	30	BL	P
<b>Series</b> DOP LED Decorative Outdoor Poocket Lantern	<b>Rated Wattage</b> 9- 9W, 800 Lumens <sup>2 3</sup> 11-11W, 1100 Lumens <sup>1 2</sup>	<b>Driver Type</b> 120-120V <sup>1</sup>	<b>CRI</b> 8 80+ CRI <sup>3</sup>	<b>Color Temp</b> 30 3000K <sup>3</sup>	<b>Finish</b> WH- White <sup>1</sup> BL- Black <sup>3</sup>	<b>Options</b> P- Photocell

Specifications and Dimensions subject to change without notice.

- <sup>1</sup> Made to order items. Minimum 90 day lead time. Minimum 500 order quantity.
- <sup>2</sup> Energy star listed
- <sup>3</sup> Quick ship: Made To Order Only

# Ordering Information

## Dimensions



DOA Series

9W, 800 Lumens



## Specification Features

### Construction

Rugged die cast aluminum housing withstands outdoor environments. Outer surface treated with durable power coating to provide resistant to corrosion, rust, weathering, and or degradation. Performance engineered internal heat dissipation fins provide superior thermal management for lens life and reliability.

### Qualifications

All luminaires are built to UL 1598 and 2108 standards, and bear appropriate ETL labels. Damp location labeling is standard. Emergency equipped fixtures labeled UL924. Adheres to LM70, LM80, and TM21 industry standards.

### Warranty

3-year Limited Warranty. See warranty documentation for more information.

### Electrical

120V Driver operates at 60Hz

### Installation

Designed for mounting on 4" electrical J-Box.

Rated Life 50,000 hours  
Limited Warranty 3 years  
Efficacy Up to 89 LPW  
Continuous N/A

Quick Ship

Made to order only

## Ordering Information

Example:DOA-9-120-850-WH

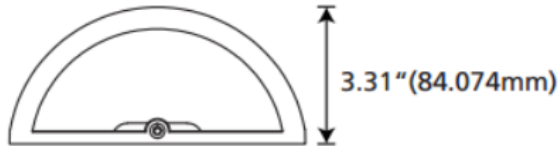
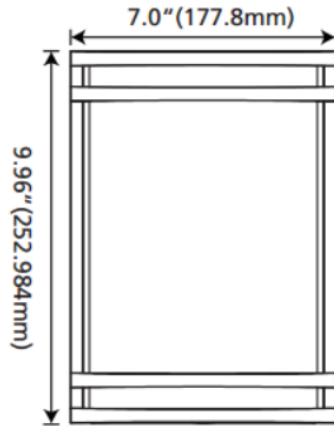
DOA	9	120	8	30	WH
<b>Series</b> DOA Decorative Outdoor Coach Lantern	<b>Rated Wattage</b> 9- 9W, 800 Lumens <sup>1</sup>	<b>Driver Type</b> 120-120V <sup>1</sup>	<b>CRI</b> 8 80+ CRI	<b>Color temp</b> 30 3000 K <sup>1</sup> 50 5000 K <sup>1</sup>	<b>Finish</b> WH- White <sup>1</sup> ORB-Oil Rubbed Bronze <sup>1</sup>

Specifications and Dimensions subject to change without notice.

<sup>1</sup> Quick ship: Made To Order Only

# Ordering Information

## Dimensions



**OWS Series**  
9W(800 Lumens)

**Rated Life** 50,000 hours  
**Limited Warranty** 3 years  
**Efficacy** Up to 88 LPW

**Quick Ship**  
OWS-9-120-930-GY  
OWS-9-120-930-BR



## Specification Features

### Construction

Contemporary styled fixture. Two twin steel rings surrounded a high-transmission frosted plastic diffuser designed to eliminate glare and optimize lumen output.

### Electrical

Equipped standard with 120V-277V driver.

### Qualifications

All luminaires are built to UL 1598 and 2108 standards, and bear appropriate ETL labels. Damp location labeling is standard. Emergency equipped fixtures labeled UL924. Adheres to LM70, LM80, and TM21 industry standards. ENERGY STAR® certified product (for 3000K and 4000K only) and Title 24 qualified. Dedicated 120V Models are FCC Title 47 CFR, Part 15, Class B for residential and commercial applications. California Title 24 Compliant, JA8 compliant, CEC Listed.

### Installation

Designed for wall mounting on 4" electrical J-Box.

### Warranty

3-year Limited Warranty. See warranty documentation for more information.

## Ordering Information

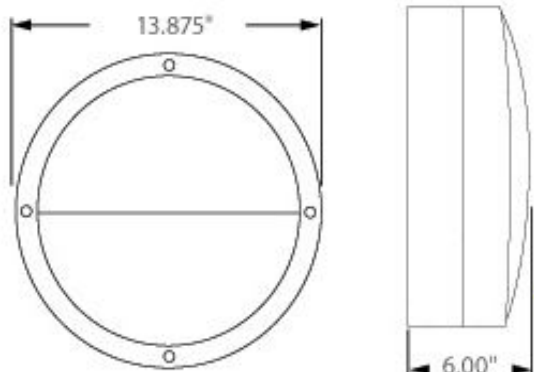
Example: OWS-9-120-930-GY

OWS	9	120	9	30	GY
<b>Series</b> OWS Outdoor Wall Sconce	<b>Rated Wattage</b> 9-9W,(800 Lumens) <sup>2</sup>	<b>Driver Type</b> 120- 120V <sup>2</sup>	<b>CRI</b> 9 90+ CRI	<b>Color Temp</b> 30-3000 K <sup>2</sup>	<b>Finish</b> GY- Grey BR- Bronze

Specifications and Dimensions subject to change without notice.

# Ordering Information

## Dimensions



## Specification Features

### Construction

Rugged die cast aluminum housing withstands outdoor environments. Outer surface treated with durable power coating to provide resistance to corrosion, rust, weathering, and or degradation. Performance engineered internal heat dissipation fins provide superior thermal management for LED life and reliability. Lens design and materials provide uniform appearance without pixelation.

### Qualifications

All luminaires are built to UL 1598 and 2108 standards, and bear appropriate ETL labels. Wet location labeling is standard. Emergency equipped fixtures labeled UL924. Adheres to LM70, LM80, and TM21 industry standards.

### Warranty

5-year Limited Warranty. See warranty documentation for more information.

### Electrical

120V Driver operates at 60Hz

### Installation

Designed for mounting on 4" electrical J-Box.



### ABH Series

13-13W (1300 Lumens)

26- 26W (2400 Lumens)

Rated Life 60,000 hours

Limited Warranty 5-years

Efficacy Up to 100 LPW

Quick ship

Made to order only

## Ordering Information

Example: ABH-13-120-830

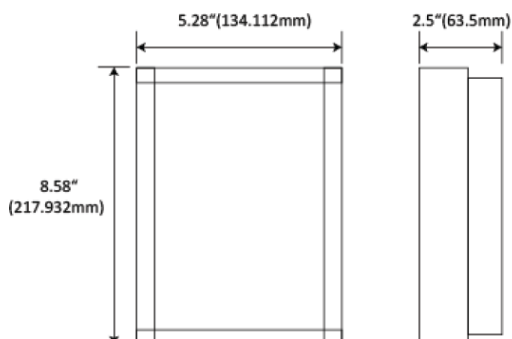
ABH	13	120	8	30		
<b>Series</b>	<b>Rated Wattage</b>	<b>Driver Type</b>	<b>CRI</b>	<b>Color Temp</b>		
<b>ABH</b>	<b>13-13W (1300 Lumens)<sup>1</sup></b>	<b>120-120V<sup>1</sup></b>	<b>8 80+ CRI</b>	<b>30 3000K<sup>1</sup></b>		
Architectural LED Bulkhead	<b>26- 26W (2400 Lumens)</b>			<b>40 4000K<sup>1</sup></b>		

Specifications and Dimensions subject to change without notice.

<sup>1</sup> Made to order items. Minimum 90 day lead time. Minimum 500 order quantity.

# Ordering Information

## Dimensions



**AWP Series**

9W, 600 Lumens



## Specification Features

### Construction

Rugged die cast aluminum housing withstands outdoor environments. Outer surface treated with durable power coating to provide resistant to corrosion, rust, weathering, and or degradation. Performance engineered internal heat dissipation provide superior thermal management for LED life and reliability.

### Qualifications

All luminaires are built to UL 1598 and 2108 standards, and bear appropriate ETL labels. Wet location labeling is standard. Emergency equipped fixtures labeled UL924. Adheres to LM70, LM80, and TM21 industry standards. ENERGY STAR® certified product (for 3000K and 4000K only) and Title 24 qualified. Dedicated 120V Models are FCC Title 47 CFR, Part 15, Class B for residential and commercial applications. California Title 24 Compliant, JA8 compliant.

### Electrical

Equipped standard with 120V fixed output driver operating at 60HZ.

### Installation

Designed for mounting on 4" electrical J-Box.

### Warranty

3-year Limited Warranty. See warranty documentation for more information.

**Rated Life** 60,000 hours  
**Limited Warranty** 3 years  
**Efficacy** Up to 66 LPW

**Quick Ship**

AWP-9-120-830-BL

## Ordering Information

Example: AWP-9-120-830-BL

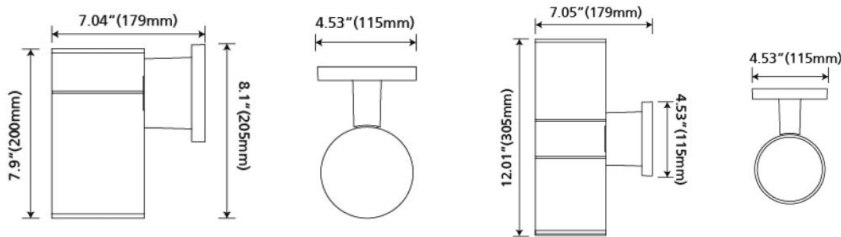
AWP	9	120	8	30	BL	
<b>Series</b> AWP Architectural Wall Pack	<b>Rated Wattage</b> 9- 9W, 600 Lumens	<b>Driver Type</b> 120- 120V	<b>CRI</b> 8 80+ CRI	<b>Color Temp</b> 30 3000 Kelvin 50 5000 Kelvin <sup>1</sup>	<b>Color</b> BL-Black	

Specifications and Dimensions subject to change without notice.

<sup>1</sup> Made to order items. Minimum 90 day lead time. Minimum 500 order quantity.

# Ordering Information

## Dimensions



DOWN ONLY

UP & DOWN



### LOC Series

12W, 1100 Lumens  
24W, 2200 Lumens

## Specification Features



### Construction

Rugged die cast aluminum housing withstands outdoor environments. Outer surface treated with durable power coating to provide resistant to corrosion, rust, weathering, and or degradation. Performance engineered internal heat dissipation fins provide superior thermal management for LED life and reliability. Clear Tempered glass lens.

### Qualifications

All luminaires are built to UL 1598 and 2108 standards, and bear appropriate ETL labels. Wet location labeling is standard. Emergency equipped fixtures labeled UL924. Adheres to LM70, LM80, and TM21 industry standards. ENERGY STAR® certified product (for 3000K only). Dedicated 120V Models are FCC Title 47 CFR, Part 15, Class B for residential and commercial applications.

### Electrical

Equipped standard with fixed output 120V driver operating at 60Hz. Long Life LED's, 60,000 hours at L80 with projected life over 100,000 hours for reduced life cycle maintenance costs. Two LED color (Kelvin) temperature options and > 80 CRI.

### Installation

Designed for wall mounting on 4" electrical J-Box.

### Warranty

3-year Limited Warranty. See warranty documentation for more information.

Rated Life 60,000 hours  
Limited Warranty 3 years  
Efficacy Up to 92 LPW

### Quick Ship

LOC-D-12-120-830-BL  
LOC-UD-24-120-830-BL

## Ordering Information

Example: LOC-UD-24-120-830-ORB

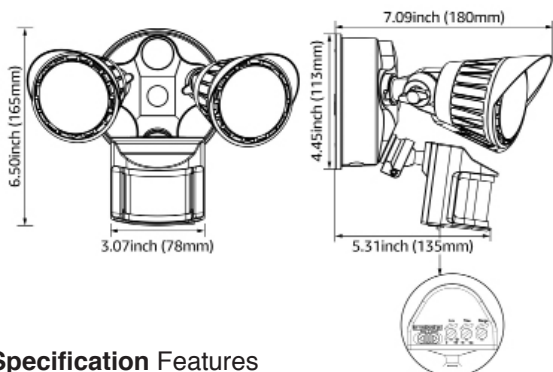
LOC	UD	24	120	8	30	ORB
<b>Series</b> LOC LED Outdoor Cylinder	<b>Distribution</b> D- Down Only <sup>2</sup> UD- Up & down <sup>2</sup>	<b>Rated Wattage</b> <u>Down Only</u> 12- 12W (1100 Lumens) <sup>2</sup> <u>Up &amp;Down Only</u> 24- 24W (2200 Lumens) <sup>2</sup>	<b>Driver Type</b> 120- 120V <sup>2</sup>	<b>CRI</b> 8 80+ CRI	<b>Color Temp</b> 30 3000K 40 4000K <sup>1</sup>	<b>Finish</b> BL- Black

Specifications and Dimensions subject to change without notice.

<sup>1</sup> Made to order items. Minimum 90 day lead time. Minimum 500 order quantity.

<sup>2</sup> Energy star listed

# Ordering Information



## Specification Features

### Construction

Two tool-free adjustable heads allow for easy aiming up/down or side to side. Rugged cast aluminum, corrosion-resistant housing in bronze or white. Clear acrylic lenses are fully gasketed to keep out moisture, dirt and bugs.

### Qualifications

All luminaires are built to UL 1598 and 2108 standards, and bear appropriate ETL labels. Wet location labeling is standard. Emergency equipped fixtures labeled UL924. Adheres to LM70, LM80, and TM21 industry standards.

### Warranty

3-year Limited Warranty. See warranty documentation for more information.

### Electrical

120V driver operates at 60Hz.

### Installation

Mounts easily to existing junction box on wall or under building eave. Adjustable heads allow precise illumination. Not recommended to wire multiple fixtures in parallel.



THF Series

20W, 1440 Lumens

Rated Life 60,000 hours  
Limited Warranty 3 years  
Efficacy Up to 72 LPW  
Continuous N/A

Quick Ship

THF-20-120-850-WH  
THF-20-120-850-ORB

## Ordering Information

Example: THF-20-120-850-WH

THF	20	120	8	50	WH
<b>Series</b> THF Head Floodlight with Motion Sensor	<b>Rated Wattage</b> 20-20W, 1440 Lumens <sup>1</sup>	<b>Driver Type</b> 120-120V <sup>1</sup>	<b>CRI</b> 8 80+ CRI	<b>Color Temp</b> 40 4000 K <sup>1 2</sup> 50 5000 K <sup>1 2</sup>	<b>Color Temp</b> WH- White <sup>1</sup> ORB- Oil Rubbed Bronze <sup>1</sup>

Specifications and Dimensions subject to change without notice.

<sup>1</sup> Quick ship:

<sup>2</sup> Typical color consistency. May vary or be changed.



Globalux Lighting LLC reserves the right to make any changes in the design, construction and listing approval of the products listed in this catalog which may be required by law or by standards of any regulatory body or at its discretion. Specifications are subject to change without notice.